



Arrow Maxi Race Tech Aluminum Exhaust Slip On Honda 1100 Africa Twin

72625AK

[Read More](#)

SKU:

Price: ₹67,000.00

Categories: [Exhausts](#)

Product Description

Arrow Maxi Race Tech Aluminum Exhaust

72625AK The Maxi Race-Tech by Arrow silencer is an excellent compromise between performance and aesthetics. Thanks to the terminal, you will get a small increase in performance in terms of torque and power. In addition, a sportier and more captivating design will be given to your bike. In addition to performance, the sound of the bike will be accentuated making it more free and open. Finally, the terminal can be safely used on the road thanks to the homologation. Technical Features Material: Aluminum Back: Carbon Internal material: Stainless steel **NB: The package contains the terminal, homologation booklet and all the small parts necessary for correct assembly.**

Brembo Brake Pad Front Honda 1100 Africa Twin

07H062SA

[Read More](#)

SKU:

Price: ₹3,900.00

Categories: [Brake Pad](#)



Product Description

07HO62SA Product Detail This is a sintered compound, specific for front application, characterized by excellent efficiency in all conditions of use. It therefore represents an ideal alternative to original brake pads, both when cold and when hot. This compound is characterized by low wear which guarantees long life and suitable mileage. 2 brake pads are sold with this set. They will fit 1 caliper. 2 sets are needed for the front wheel

Brembo Brake Pad Rear Honda 1100 Africa Twin

07HO36SP

[Read More](#)

SKU:

Price: ₹3,950.00

Categories: [Brake Pad](#)



Product Description

07HO36SP Product Detail This is a sintered compound, specific for front application, characterized by excellent efficiency in all conditions of use. It therefore represents an ideal alternative to original brake pads, both when cold and when hot. This compound is characterized by low wear which guarantees long life and suitable mileage. 2 brake pads are sold with this set. They will fit 1 caliper.

Brembo Master Cylinder 19RCS Corso Corta 110C74010 Honda



110C74010

[Read More](#)

SKU:

Price: ₹41,000.00

Categories: [Master Cylinder](#)

Product Description

Brembo 110C74010

The 19RCS CORSA CORTA is characterized by the possibility it provides the rider to adapt the braking "bite point" to the desired riding feeling, in addition to the RCS (Ratio Click System), introduced 10 years ago on the Brembo 19RCS radial brake master cylinder, which allows the center distance of the master cylinder to be adjusted to "18" or "20". The master cylinder body is made of forge aluminum alloy, machined with 5-axis CAM technology. A hard oxide coating is used for the surface finish, which guarantees that the master cylinder main body is highly resistant to wear and its components move easily. The floating piston and the seals derive directly from those used in MotoGP, as do the housings for the bleeding and fueling systems, which are inclined by more than 30° to make bleeding the master cylinder easier.



Brembo Series Oro Floating Front Brake Rotor ABS Honda CBR RR 2009-16

78B40876

[Read More](#)

SKU:

Price: ₹25,000.00

Categories: [Brake Rotor](#)

Product Description

Brembo Series Oro Floating Front Brake Rotor 78B40876 **We remind you that this listing refers to the single rotor. If your bike has two rotor you need to buy two.** Brembo offers with the Gold Series a complete line of rotors that can satisfy any need: perfectly interchangeable with the series rotors, they are the choice of riders who do not want to renounce the Brembo quality. They are composed of the braking strip in stainless steel, connected through 10 pawls to the bell made of aluminum alloy, the latter worked CNC and then anodized. The pawls allow a controlled movement between the band and the bell and allow the materials to dilate when stressed while remaining in the correct operating tolerances.



CNC Racing Rocket Bar-end Mirror Pair Honda - specific models

MR701B + MR702B

[Read More](#)

SKU:

Price: ₹22,000.00

Categories: [Mirrors](#)

Product Description

CNC Racing Rocket Bar-end Mirror Pair MR701B + MR702B Bar-end mirror, machined from light

alloy billet and then given an anodized surface finish. The useful area extends on an 81mm diameter, to ensure the best possible visibility. The mirror can be fitted in either low or high position and is compatible with most handlebars, both original and non, with an expansion assembly system (handlebar internal diameter Ø 13.5/19 mm) or with a M6 screw, included in the package. It is suggested to purchase our Brembo master cylinder clamp CV001.

UNIVERSAL PRODUCT: before purchasing, check the possibility of correct assembly at a specialized workshop

Domino Hand Grip A010



A01041C4840B7-0 BLACK/BLUE

[Read More](#)

SKU:

Price: ₹2,400.00

Categories: [Grips](#)

Product Description

Domino Hand Grip A01041C4840B7-0 Domino produces a wide variety of grips for its own controls, designed for handlebars with diameter of 22 and 25.4 mm, for a range of motorcycles. Why use Domino? It is vital to know the precise feel of your throttle control, which allows tiny hand movements to channel the exact power you want from your motorbike. Domino is second to none in the art of motorcycle controls. This is why most European motorcycle manufactures choose Domino as original equipment.

Domino Hand Grip A010



A01041C4440B7-0 BLACK/GREEN

[Read More](#)

SKU:

Price: ₹2,400.00

Categories: [Grips](#)

Product Description

Domino Hand Grip A01041C4440B7-0 Domino produces a wide variety of grips for its own controls, designed for handlebars with diameter of 22 and 25.4 mm, for a range of motorcycles. Why use Domino? It is vital to know the precise feel of your throttle control, which allows tiny hand movements to channel the exact power you want from your motorbike. Domino is second to none in the art of motorcycle controls. This is why most European motorcycle manufactures choose Domino as original equipment.

Domino Hand Grip A010



A01041C5240B7-0 BLACK/GREY

[Read More](#)

SKU:

Price: ₹2,400.00

Categories: [Grips](#)

Product Description

Domino Hand Grip A01041C5240B7-0 Domino produces a wide variety of grips for its own controls, designed for handlebars with diameter of 22 and 25.4 mm, for a range of motorcycles. Why use Domino? It is vital to know the precise feel of your throttle control, which allows tiny hand movements to channel the exact power you want from your motorbike. Domino is second to none in the art of motorcycle controls. This is why most European motorcycle manufactures choose Domino as original equipment.

Domino Hand Grip A010



A01041C4240B7-0 BLACK/RED

[Read More](#)

SKU:

Price: ₹2,400.00

Categories: [Grips](#)

Product Description

Domino Hand Grip A01041C4240B7-0 Domino produces a wide variety of grips for its own controls, designed for handlebars with diameter of 22 and 25.4 mm, for a range of motorcycles. Why use Domino? It is vital to know the precise feel of your throttle control, which allows tiny hand movements to channel the exact power you want from your motorbike. Domino is second to none in the art of motorcycle controls. This is why most European motorcycle manufactures choose Domino as original equipment.

Domino Hand Grip A010



A01041C4042B7-0 RED/BLACK

[Read More](#)

SKU:

Price: ₹2,400.00

Categories: [Grips](#)

Product Description

Domino Hand Grip A01041C4042B7-0 Domino produces a wide variety of grips for its own controls, designed for handlebars with diameter of 22 and 25.4 mm, for a range of motorcycles. Why use Domino? It is vital to know the precise feel of your throttle control, which allows tiny hand movements to channel the exact power you want from your motorbike. Domino is second to none in the art of motorcycle controls. This is why most European motorcycle manufactures choose Domino as original equipment.

Domino Hand Grip A010



A01041C4540B7-0 BLACK/ORANGE

[Read More](#)

SKU:

Price: ₹2,400.00

Categories: [Grips](#)

Product Description

Domino Hand Grip A01041C4540B7-0 Domino produces a wide variety of grips for its own controls, designed for handlebars with diameter of 22 and 25.4 mm, for a range of motorcycles. Why use Domino? It is vital to know the precise feel of your throttle control, which allows tiny hand movements to channel the exact power you want from your motorbike. Domino is second to none in the art of motorcycle controls. This is why most European motorcycle manufactures choose Domino as original equipment.



Domino Hand Grip A010

A01041C4052B7-0 GREY/BLACK

[Read More](#)

SKU:

Price: ₹2,400.00

Categories: [Grips](#)

Product Description

Domino Hand Grip A01041C4052B7-0 Domino produces a wide variety of grips for its own controls, designed for handlebars with diameter of 22 and 25.4 mm, for a range of motorcycles. Why use Domino? It is vital to know the precise feel of your throttle control, which allows tiny hand movements to channel the exact power you want from your motorbike. Domino is second to none in the art of motorcycle controls. This is why most European motorcycle manufactures choose Domino as original equipment.



Domino Hand Grip A010

A01041C4050B7-0 FLUO YELLOW/BLACK

[Read More](#)

SKU:

Price: ₹2,400.00

Categories: [Grips](#)

Product Description

Domino Hand Grip A01041C4050B7-0 Domino produces a wide variety of grips for its own controls, designed for handlebars with diameter of 22 and 25.4 mm, for a range of motorcycles. Why use Domino? It is vital to know the precise feel of your throttle control, which allows tiny hand movements to channel the exact power you want from your motorbike. Domino is second

to none in the art of motorcycle controls. This is why most European motorcycle manufactures choose Domino as original equipment.



Domino Hand Grip A010

A01041C4642B7-0 RED/WHITE

[Read More](#)

SKU:

Price: ₹2,400.00

Categories: [Grips](#)

Product Description

Domino Hand Grip A01041C4642B7-0 Domino produces a wide variety of grips for its own controls, designed for handlebars with diameter of 22 and 25.4 mm, for a range of motorcycles. Why use Domino? It is vital to know the precise feel of your throttle control, which allows tiny hand movements to channel the exact power you want from your motorbike. Domino is second to none in the art of motorcycle controls. This is why most European motorcycle manufactures choose Domino as original equipment.



Domino Hand Grip A010

A01041C4740B7-0 BLACK/YELLOW

[Read More](#)

SKU:

Price: ₹2,400.00

Categories: [Grips](#)

Product Description

Domino Hand Grip A01041C4740B7-0 Domino produces a wide variety of grips for its own controls, designed for handlebars with diameter of 22 and 25.4 mm, for a range of motorcycles. Why use Domino? It is vital to know the precise feel of your throttle control, which allows tiny hand movements to channel the exact power you want from your motorbike. Domino is second to none in the art of motorcycle controls. This is why most European motorcycle manufactures choose Domino as original equipment.

Domino Hand Grip A250



A25041C4072C7-0 ANTHRACITE/BLACK

[Read More](#)

SKU:

Price: ₹2,500.00

Categories: [Grips](#)

Product Description

Domino Hand Grip A25041C4072C7-0 Domino produces a wide variety of grips for its own controls, designed for handlebars with diameter of 22 and 25.4 mm, for a range of motorcycles. Why use Domino? It is vital to know the precise feel of your throttle control, which allows tiny hand movements to channel the exact power you want from your motorbike. Domino is second to none in the art of motorcycle controls. This is why most European motorcycle manufactures choose Domino as original equipment.

Domino Hand Grip A250



A25041C4840B7-0 BLACK/BLUE

[Read More](#)

SKU:

Price: ₹2,500.00

Categories: [Grips](#)

Product Description

Domino Hand Grip A25041C4840B7-0 Domino produces a wide variety of grips for its own controls, designed for handlebars with diameter of 22 and 25.4 mm, for a range of motorcycles. Why use Domino? It is vital to know the precise feel of your throttle control, which allows tiny hand movements to channel the exact power you want from your motorbike. Domino is second to none in the art of motorcycle controls. This is why most European motorcycle manufactures choose Domino as original equipment.

Domino Hand Grip A250



A25041C5240B7-0 BLACK/GREY

[Read More](#)

SKU:

Price: ₹2,500.00

Categories: [Grips](#)

Product Description

Domino Hand Grip A25041C5240B7-0 Domino produces a wide variety of grips for its own controls, designed for handlebars with diameter of 22 and 25.4 mm, for a range of motorcycles. Why use Domino? It is vital to know the precise feel of your throttle control, which allows tiny hand movements to channel the exact power you want from your motorbike. Domino is second to none in the art of motorcycle controls. This is why most European motorcycle manufactures choose Domino as original equipment.

Domino Hand Grip A250



A25041C4540B7-0 BLACK/ORANGE

[Read More](#)

SKU:

Price: ₹2,500.00

Categories: [Grips](#)

Product Description

Domino Hand Grip A25041C4540B7-0 Domino produces a wide variety of grips for its own controls, designed for handlebars with diameter of 22 and 25.4 mm, for a range of motorcycles. Why use Domino? It is vital to know the precise feel of your throttle control, which allows tiny hand movements to channel the exact power you want from your motorbike. Domino is second to none in the art of motorcycle controls. This is why most European motorcycle manufactures choose Domino as original equipment.

Domino Hand Grip A250



A25041C4240B7-0 BLACK/RED

[Read More](#)

SKU:

Price: ₹2,500.00

Categories: [Grips](#)

Product Description

Domino Hand Grip A25041C4240B7-0 Domino produces a wide variety of grips for its own controls, designed for handlebars with diameter of 22 and 25.4 mm, for a range of motorcycles. Why use Domino? It is vital to know the precise feel of your throttle control, which allows tiny hand movements to channel the exact power you want from your motorbike. Domino is second to none in the art of motorcycle controls. This is why most European motorcycle manufactures choose Domino as original equipment.

Domino Hand Grip A350



A35041C5270C7-0 ANTHRACITE/GREY

[Read More](#)

SKU:

Price: ₹2,500.00

Categories: [Grips](#)

Product Description

Domino Hand Grip A35041C5270C7-0 Domino produces a wide variety of grips for its own controls, designed for handlebars with diameter of 22 and 25.4 mm, for a range of motorcycles. Why use Domino? It is vital to know the precise feel of your throttle control, which allows tiny hand movements to channel the exact power you want from your motorbike. Domino is second to none in the art of motorcycle controls. This is why most European motorcycle manufactures choose Domino as original equipment.

Domino Hand Grip A350



A35041C4042C7-0 RED/BLACK

[Read More](#)

SKU:

Price: ₹2,500.00

Categories: [Grips](#)

Product Description

Domino Hand Grip A35041C4042C7-0 Domino produces a wide variety of grips for its own controls, designed for handlebars with diameter of 22 and 25.4 mm, for a range of motorcycles. Why use Domino? It is vital to know the precise feel of your throttle control, which allows tiny hand movements to channel the exact power you want from your motorbike. Domino is second to none in the art of motorcycle controls. This is why most European motorcycle manufactures choose Domino as original equipment.

Domino Hand Grip A450



A45041C4070B7-0 ANTHRACITE/BLACK

[Read More](#)

SKU:

Price: ₹2,500.00

Categories: [Grips](#)

Product Description

Domino Hand Grip A45041C4070B7-0 Domino produces a wide variety of grips for its own controls, designed for handlebars with diameter of 22 and 25.4 mm, for a range of motorcycles. Why use Domino? It is vital to know the precise feel of your throttle control, which allows tiny hand movements to channel the exact power you want from your motorbike. Domino is second to none in the art of motorcycle controls. This is why most European motorcycle manufactures choose Domino as original equipment.

Domino Hand Grip A450



A45041C4840B7-0 BLACK/BLUE

[Read More](#)

SKU:

Price: ₹2,500.00

Categories: [Grips](#)

Product Description

Domino Hand Grip A45041C4840B7-0 Domino produces a wide variety of grips for its own controls, designed for handlebars with diameter of 22 and 25.4 mm, for a range of motorcycles. Why use Domino? It is vital to know the precise feel of your throttle control, which allows tiny hand movements to channel the exact power you want from your motorbike. Domino is second to none in the art of motorcycle controls. This is why most European motorcycle manufactures choose Domino as original equipment.

Domino Hand Grip A450



A45041C4440B7-0 BLACK/GREEN

[Read More](#)

SKU:

Price: ₹2,500.00

Categories: [Grips](#)

Product Description

Domino Hand Grip A45041C4440B7-0 Domino produces a wide variety of grips for its own controls, designed for handlebars with diameter of 22 and 25.4 mm, for a range of motorcycles. Why use Domino? It is vital to know the precise feel of your throttle control, which allows tiny hand movements to channel the exact power you want from your motorbike. Domino is second to none in the art of motorcycle controls. This is why most European motorcycle manufactures choose Domino as original equipment.

Domino Hand Grip A450

A45041C4540B7-0 BLACK/ORANGE

[Read More](#)

SKU:

Price: ₹2,500.00

Categories: [Grips](#)



Product Description

Domino Hand Grip A45041C4540B7-0 Domino produces a wide variety of grips for its own controls, designed for handlebars with diameter of 22 and 25.4 mm, for a range of motorcycles. Why use Domino? It is vital to know the precise feel of your throttle control, which allows tiny hand movements to channel the exact power you want from your motorbike. Domino is second to none in the art of motorcycle controls. This is why most European motorcycle manufactures choose Domino as original equipment.

Domino Hand Grip A450

A45041C4240B7-0 BLACK/RED

[Read More](#)

SKU:

Price: ₹2,500.00

Categories: [Grips](#)



Product Description

Domino Hand Grip A45041C4240B7-0 Domino produces a wide variety of grips for its own controls, designed for handlebars with diameter of 22 and 25.4 mm, for a range of motorcycles. Why use Domino? It is vital to know the precise feel of your throttle control, which allows tiny hand movements to channel the exact power you want from your motorbike. Domino is second to none in the art of motorcycle controls. This is why most European motorcycle manufactures choose Domino as original equipment.

Domino Hand Grip A450

A45041C4048B7-0 BLUE/BLACK

[Read More](#)

SKU:

Price: ₹2,500.00

Categories: [Grips](#)



Product Description

Domino Hand Grip A45041C4048B7-0 Domino produces a wide variety of grips for its own controls, designed for handlebars with diameter of 22 and 25.4 mm, for a range of motorcycles. Why use Domino? It is vital to know the precise feel of your throttle control, which allows tiny hand movements to channel the exact power you want from your motorbike. Domino is second to none in the art of motorcycle controls. This is why most European motorcycle manufactures choose Domino as original equipment.

Domino Hand Grip A450

A45041C4248B7-0 BLUE/RED

[Read More](#)

SKU:

Price: ₹2,500.00

Categories: [Grips](#)



Product Description

Domino Hand Grip A45041C4248B7-0 Domino produces a wide variety of grips for its own controls, designed for handlebars with diameter of 22 and 25.4 mm, for a range of motorcycles. Why use Domino? It is vital to know the precise feel of your throttle control, which allows tiny hand movements to channel the exact power you want from your motorbike. Domino is second to none in the art of motorcycle controls. This is why most European motorcycle manufactures choose Domino as original equipment.

Domino Hand Grip A450

A45041C4044B7-0 GREEN/BLACK

[Read More](#)

SKU:

Price: ₹2,500.00

Categories: [Grips](#)



Product Description

Domino Hand Grip A45041C4044B7-0 Domino produces a wide variety of grips for its own controls, designed for handlebars with diameter of 22 and 25.4 mm, for a range of motorcycles. Why use Domino? It is vital to know the precise feel of your throttle control, which allows tiny hand movements to channel the exact power you want from your motorbike. Domino is second to none in the art of motorcycle controls. This is why most European motorcycle manufactures choose Domino as original equipment.

Domino Hand Grip A450

A45041C5052B7-0 GREY/FLUO YELLOW

[Read More](#)

SKU:

Price: ₹2,500.00

Categories: [Grips](#)



Product Description

Domino Hand Grip A45041C5052B7-0 Domino produces a wide variety of grips for its own controls, designed for handlebars with diameter of 22 and 25.4 mm, for a range of motorcycles. Why use Domino? It is vital to know the precise feel of your throttle control, which allows tiny hand movements to channel the exact power you want from your motorbike. Domino is second to none in the art of motorcycle controls. This is why most European motorcycle manufactures choose Domino as original equipment.

Domino Hand Grip A450

A45041C4042B7-0 RED/BLACK

[Read More](#)

SKU:

Price: ₹2,500.00

Categories: [Grips](#)



Product Description

Domino Hand Grip A45041C4042B7-0 Domino produces a wide variety of grips for its own controls, designed for handlebars with diameter of 22 and 25.4 mm, for a range of motorcycles. Why use Domino? It is vital to know the precise feel of your throttle control, which allows tiny hand movements to channel the exact power you want from your motorbike. Domino is second to none in the art of motorcycle controls. This is why most European motorcycle manufactures choose Domino as original equipment.

Domino Hand Grip A450

A45041C4740B7-0 BLACK/YELLOW

[Read More](#)

SKU:

Price: ₹2,500.00

Categories: [Grips](#)



Product Description

Domino Hand Grip A45041C4740B7-0 Domino produces a wide variety of grips for its own controls, designed for handlebars with diameter of 22 and 25.4 mm, for a range of motorcycles. Why use Domino? It is vital to know the precise feel of your throttle control, which allows tiny hand movements to channel the exact power you want from your motorbike. Domino is second to none in the art of motorcycle controls. This is why most European motorcycle manufactures choose Domino as original equipment.



Domino Hand Grip A450

A45041C5240B7-0 BLACK/GREY

[Read More](#)

SKU:

Price: ₹2,500.00

Categories: [Grips](#)

Product Description

Domino Hand Grip A45041C5240B7-0 Domino produces a wide variety of grips for its own controls, designed for handlebars with diameter of 22 and 25.4 mm, for a range of motorcycles. Why use Domino? It is vital to know the precise feel of your throttle control, which allows tiny hand movements to channel the exact power you want from your motorbike. Domino is second to none in the art of motorcycle controls. This is why most European motorcycle manufactures choose Domino as original equipment.



Domino Hand Grip A450

A45041C4640B7-0 BLACK/WHITE

[Read More](#)

SKU:

Price: ₹2,500.00

Categories: [Grips](#)

Product Description

Domino Hand Grip A45041C4640B7-0 Domino produces a wide variety of grips for its own controls, designed for handlebars with diameter of 22 and 25.4 mm, for a range of motorcycles. Why use Domino? It is vital to know the precise feel of your throttle control, which allows tiny hand movements to channel the exact power you want from your motorbike. Domino is second to none in the art of motorcycle controls. This is why most European motorcycle manufactures choose Domino as original equipment.



Domino Hand Grip A450

A45041C4648B7-0 BLUE/WHITE

[Read More](#)

SKU:

Price: ₹2,500.00

Categories: [Grips](#)

Product Description

Domino Hand Grip A45041C4648B7-0 Domino produces a wide variety of grips for its own controls, designed for handlebars with diameter of 22 and 25.4 mm, for a range of motorcycles. Why use Domino? It is vital to know the precise feel of your throttle control, which allows tiny hand movements to channel the exact power you want from your motorbike. Domino is second to none in the art of motorcycle controls. This is why most European motorcycle manufactures choose Domino as original equipment.



Domino Hand Grip A450

A45041C4642B7-0 RED/WHITE

[Read More](#)

SKU:

Price: ₹2,500.00

Categories: [Grips](#)

Product Description

Domino Hand Grip A45041C4642B7-0 Domino produces a wide variety of grips for its own controls, designed for handlebars with diameter of 22 and 25.4 mm, for a range of motorcycles. Why use Domino? It is vital to know the precise feel of your throttle control, which allows tiny hand movements to channel the exact power you want from your motorbike. Domino is second to none in the art of motorcycle controls. This is why most European motorcycle manufactures choose Domino as original equipment.



Galespeed by Active Brake Master Cylinder 14VRC Series Honda (all models)

VRC14X-17L

[Read More](#)

SKU:

Price: ₹31,000.00

Categories: [Master Cylinder](#)

Product Description

Galespeed Brake Master Cylinder

VRC14X-17L Launching for the first time in India, the Galespeed line of Brake and Clutch cylinders from Active, Japan's biggest manufacturer of brake calipers and cylinders. The VRC - Variable Ratio Control series of master cylinders give you wider lever ratio adjust range (0.25mm per click, 8 clicks/max. 2mm adjust range), and helps you to find the most suitable brake feeling without being affected by different brake calipers. Fully developed and manufactured in Japan, available solely now with Lanesplit.



Galespeed by Active Brake Master Cylinder 17VRC Series Honda (all models)

VRC17A-17B

[Read More](#)

SKU:

Price: ₹31,000.00

Categories: [Master Cylinder](#)

Product Description

Galespeed Brake Master Cylinder

VRC17A-17B Launching for the first time in India, the Galespeed line of Brake and Clutch

cylinders from Active, Japan's biggest manufacturer of brake calipers and cylinders. The VRC - Variable Ratio Control series of master cylinders give you wider lever ratio adjust range (0.25mm per click, 8 clicks/max. 2mm adjust range), and helps you to find the most suitable brake feeling without being affected by different brake calipers. Fully developed and manufactured in Japan, available solely now with Lanesplit.



Galespeed by Active Brake Master Cylinder 19VRC Series Honda (all models)

VRC19A-19B

[Read More](#)

SKU:

Price: ₹31,000.00

Categories: [Master Cylinder](#)

Product Description

Galespeed Brake Master Cylinder

VRC19A-19B Launching for the first time in India, the Galespeed line of Brake and Clutch cylinders from Active, Japan's biggest manufacturer of brake calipers and cylinders. The VRC - Variable Ratio Control series of master cylinders give you wider lever ratio adjust range (0.25mm per click, 8 clicks/max. 2mm adjust range), and helps you to find the most suitable brake feeling without being affected by different brake calipers. Fully developed and manufactured in Japan, available solely now with Lanesplit.



GB Racing Clutch Cover Honda CBR 650R

EC-CBR650F-2014-2-GBR

[Read More](#)

SKU:

Price: ₹15,000.00

Categories: [Clutch Cover](#)

Product Description

GB Racing Clutch Cover Set EC-CBR650F-2014-2-GBR GB Racing products are the benchmark in high-performance, bolt-on motorcycle protection for the short circuit, road racing and street bike community and the only manufacturer of motorcycle protection to have received FIM product approval, a mark of quality carried since 2009. This has now been renewed for 2021 through to 2023 on our range of bolt-on secondary engine covers. Championships cover IDM, AMA, CIV, IDM, FFM EWC, BSB, WSBK, MotoGP and more.

Kappa Handlebar Bag

AH206

[Read More](#)

SKU:

Price: ₹4,000.00

Categories: [Kappa Bags](#)



Product Description

Product Detail

Universal handlebar bag with smartphone holder. Fits most smartphones available on the market up to 6.5 inches. Sizes: 22x8x15 cm

As standard: • Shoulder belt • Rain cover • Reflective prints

Materials: 600D Polyester with PVC coating

Fitting kit: adjustable and universal tear-closure straps to fit both motorcycles and scooters



Kappa Leg Bag

AH209

[Read More](#)

SKU:

Price: ₹3,500.00

Categories: [Kappa Bags](#)

Product Description

Product Detail

Leg bag.

Features:

- Adjustable thigh strap
- Front pocket
- Inner mobile phone compartment

Kappa Leg Bag

AH204

[Read More](#)

SKU:

Price: ₹2,650.00

Categories: [Kappa Bags](#)



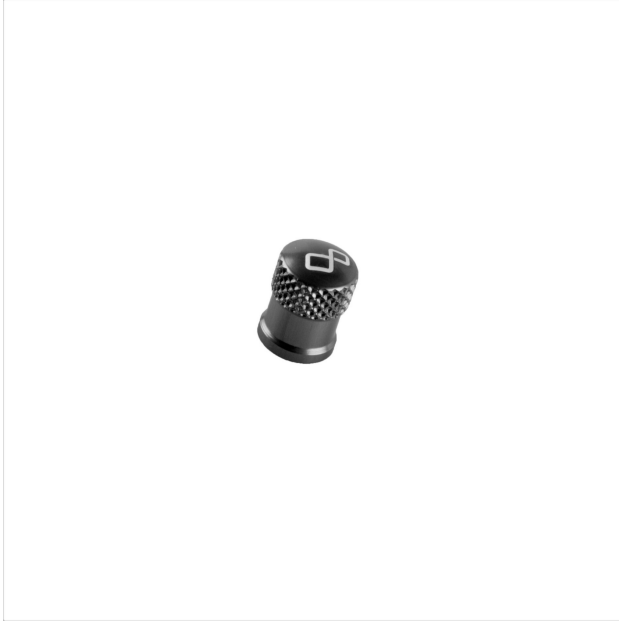
Product Description

Product Detail

Small leg bag

As standard: • Adjustable waist and thigh strap • Front pocket • Inner mobile phone compartment

Materials: 600D Polyester with PVC coating



Lightech Aluminum Wheel Valve Cap Black - All Honda Models

VALNER

[Read More](#)

SKU:

Price: ₹400.00

Categories: [Accessories](#), [Valve Caps](#)

Product Description

VALNER Wheel valve cap aluminum - Black color Make your wheels look different with Lightech Aluminum metal valve caps. Universal fit and lasts longer than the plastic caps. Individually sold - buy a pair for front and rear wheels

Lightech Aluminum Wheel Valve Cap Silver - All Honda Models

VALSIL

[Read More](#)

SKU:

Price: ₹400.00

Categories: [Accessories](#), [Valve Caps](#)



Product Description

VALSIL Wheel valve cap aluminum - Silver color Make your wheels look different with Lightech Aluminum metal valve caps. Universal fit and lasts longer than the plastic caps. Individually sold - buy a pair for front and rear wheels

Lightech Brake Lever Protector with Gold Guard End Honda CBR 1000RR

ISS113RAORO

[Read More](#)

SKU:

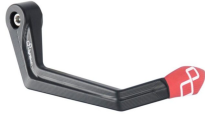
Price: ₹16,700.00

Categories: [Protectors](#)



Product Description

ISS113RAORO Aluminum Brake Lever Guard - Axle Base 132 mm / Anodized Guard end / Gold



Lighttech Brake Lever Protector with Red Guard End Honda CBR 1000RR

ISS113RAROS

[Read More](#)

SKU:

Price: ₹16,700.00

Categories: [Protectors](#)

Product Description

ISS113RAROS Aluminum Brake Lever Guard - Axle Base 132 mm / Anodized Guard end / Red



Lighttech Front Brake Master Cylinder Cover Honda CBR 1000RR - Red

FBC04ROS

[Read More](#)

SKU:

Price: ₹3,000.00

Categories: [Brake / Clutch Reservoir Cover](#)

Product Description

Lighttech Front Brake Master Cylinder Cover FBC04ROS Brake/Clutch pump Protection made to measure for your motorcycle model. Quick to install without having to make any changes. Lighttech protections are used by the most important teams in the MotoGP and SBK world championship.

Lightech Front Brake Master Cylinder Cover Honda Triumph Street Triple 765



FBC04ROS

[Read More](#)

SKU:

Price: ₹3,000.00

Categories: [Brake / Clutch Reservoir Cover](#)

Product Description

Lightech Front Brake Master Cylinder Cover FBC04ROS Brake/Clutch pump Protection made to measure for your motorcycle model. Quick to install without having to make any changes. Lightech protections are used by the most important teams in the MotoGP and SBK world championship.

Lightech Integrated Turn Signal & Rear Stop Light Pair - All Honda Models



FRE923NER

[Read More](#)

SKU:

Price: ₹6,600.00

Categories: [Turn Signals](#)

Product Description

FRE923NER

Lightech Rear Spool Black - Honda CBR 1000RR



CAVM8NER

[Read More](#)

SKU:

Price: ₹2,800.00

Categories: [Rear Spools](#)

Product Description

Lightech Rear Spool CAVM8NER Pair of Lightech tripod supports with specific M8 attack. Thanks to these supports you can use the lift stands with fork attachments. Compatible with both front and rear stands.

Lightech Sequential Turn Signal Pair - All Honda Models



FRE925NER

[Read More](#)

SKU:

Price: ₹6,600.00

Categories: [Turn Signals](#)

Product Description

FRE925NER



Mivv Delta Race Black Stainless Steel Exhaust Slip On Honda CB500X

H.084.LDRB

[Read More](#)

SKU:

Price: ₹65,300.00

Categories: [Exhausts](#)

Product Description

Mivv Delta Race Black Inox Exhaust

H.084.LDRB Material : BLACK INOX CARBON CAP Made to improve the bike's aesthetics, sound and performance, the Mivv slip-on exhaust comes from the utmost attention to design, with the aim of satisfying those who want to stand out, even through the look of their bike. The DELTA RACE exhaust is characterized by an exclusive shape which, through a gradual transformation, from conical to hexagonal. There are many details that make its style unique, such as the 3K twill carbon end cap; the perimeter band with double riveting; the input bushing machined from solid, to offer maximum coupling precision. The characteristic Mivv logo created by laser is present on the terminal. It is characterized by a central body in black stainless steel with a "Black Moon" effect, obtained thanks to a special ceramic-based painting process which gives the product a more aggressive look.



Mivv Delta Race Stainless Steel Carbon Cap Exhaust Slip On Honda CB500X

H.084.LDRX

[Read More](#)

SKU:

Price: ₹59,000.00

Categories: [Exhausts](#)

Product Description

Mivv Delta Race Stainless Steel Carbon Exhaust

H.084.LDRX Material : INOX CARBON CAP Made to improve the bike's aesthetics, sound and performance, the Mivv slip-on exhaust comes from the utmost attention to design, with the aim of satisfying those who want to stand out, even through the look of their bike. The DELTA RACE exhaust is characterized by an exclusive shape which, through a gradual transformation, from conical to hexagonal. There are many details that make its style unique, such as the 3K twill carbon end cap; the perimeter band with double riveting; the input bushing machined from solid, to offer maximum coupling precision. The characteristic Mivv logo created by laser is present on the terminal. It features a brushed stainless steel body with a "pearl" effect, obtained thanks to a special finishing process that gives the product an inimitable look.



Mivv GP Pro Black Steel Exhaust Slip On Honda CB500X

H.084.LXBP

[Read More](#)

SKU:

Price: ₹44,000.00

Categories: [Exhausts](#)

Product Description

Mivv GP Pro Black Steel Exhaust

H.084.LXBP

Material: STEEL BLACK

Made to improve the aesthetics, sound and performance of the bike, the slip-on Mivv exhaust system is born from the utmost attention to design, with the aim of satisfying those who want to stand out, even through the look of their bike. GP PRO shows a semi-artisan TIG welding, a compact and essential design and an aggressive sound. Inspired by the world of racing, the exhaust pipe is fitted with a removable protective grille that hides the dB-killer. On the terminal there is the characteristic Mivv logo realized by laser. It is characterized by a central body in black stainless steel with a "Black Moon" brushed effect, obtained with a special coloring process that gives the product a more aggressive look.



Mivv Oval Carbon End Cap Exhaust Slip On Honda CB500X

H.084.L3C

[Read More](#)

SKU:

Price: ₹50,500.00

Categories: [Exhausts](#)

Product Description

Mivv Oval Carbon End Cap Exhaust

H.084.L3C

Material : CARBON WITH CARBON CAP

Made to improve the bike's aesthetics, sound and performance, the Mivv slip-on exhaust comes from the utmost attention to design, with the aim of satisfying those who want to stand out, even through the look of their bike. The exhausts of the OVAL line adapt perfectly to any type of motorcycle. The Oval muffler, finished with great attention to detail, represents the best compromise between design and performance. Characterized by a body and cup in high thermal resistance carbon, the exhaust has open slots on the cup, a detail that gives the silencer a sportier design.



Ohlins Steering Damper Honda CBR 1000RR

SD 065

[Read More](#)

SKU:

Price: ₹47,700.00

Categories: [Steering Damper](#)

Product Description

Ohlins Steering Damper SD 065 Product Detail Available for many current motorcycles, Öhlins

steering dampers feature a wide adjustment range for the perfect setup Stroke: 63 mm
Position: Front Mounting position: Original mount



One Design Tank Pad

CGAN135P

[Read More](#)

SKU: Tank pad

Price: ₹2,500.00

Categories: [Tank Pad](#)

Product Description

One Design Tank Pad CGAN135P **Product Detail** Tank protector suitable for medium and large tanks. The protector differentiates itself for its unmistakable matt effect and soft touch sensation. The material protects the tank against scratches from jacket zippers, belt buckles, buttons and clothes. Color: Matt Black Carbon Material: Sponge Dimensions: 134 x 230 mm

Polisport Hand Guard Evolution Integral Rally & Trail - Black



8305100027 - Black Installation instructions [Assembly Instructions \(1\)](#)

[Read More](#)

SKU:

Price: ₹2,600.00

Categories: [Hand Guards](#)

Product Description

Polisport Evolution Integral Rally and Trail Hand Guard & Universal Mounting System

Foolproof handguard, now with an improved mounting system. The Integral line had been around for a long time and is a part of the Polisport line because riders love it. 8305100027 - Black Features

- Complete package includes mounting kit only for \varnothing 22 mm (handlebar diameter)
- Fits handlebars with inner diameter: \varnothing 13- \varnothing 18 (internal handlebar bolts included)
- Universal fitting: mounting kits for other outside handlebar diameters are sold separately
- Mounting kit protaper: \varnothing 25- \varnothing 27 tapered; Mounting kit magura: \varnothing 26- \varnothing 28.5 tapered
- Removable spoiler included for extra protection
- Graphics: Polisport decals



Polisport Hand Guard Hammer Enduro E MX + Universal Plastic Mounting Kit - Black

8307800002 Installation instructions [Assembly](#)

[Instructions](#)

[Read More](#)

SKU:

Price: ₹3,100.00

Categories: [Hand Guards](#)

Product Description

Hammer Enduro E MX Hand Guard & Handlebar Mounting System

Hammer is the new model on Polisport's handguards line with 1-point-mount, for MX and Enduro. With it comes a new universal mounting system developed for simple and quick installation and a perfect fit on crowded handlebars. The HAMMER offers a large plastic shape to protect hands and master cylinder, and 2 positions of horizontal adjustment to allow some level of customization when installed. The minimalist design, with horizontal oriented vents and carbon texturized plastic cover, will match your bike and give it a stylish look. Hammer handguard is available in Black.

Features

- New universal mounting system for quick, easier mounting and a perfect fit

- Large plastic guard to ensure the optimal protection for hands and master cylinder
 - Slim and low-profile
 - Horizontally orientated airflow vents for better cooling
 - Quick and easy installation
 - Mounting system bolted on the front of the plastic guard for easy installation and removal
 - Adjustable horizontally in 2 positions
 - All hardware included
 - Mounting kit provides a wider range of installation on the handlebar
-

Polisport Hand Guard MX Force + Universal Plastic Mounting Kit - Black



8308700001 - Black

[Read More](#)

SKU:

Price: ₹4,000.00

Categories: [Hand Guards](#)

Product Description

Polisport Hand Guard MX Force & Universal Mounting System

8308700001 - Black MX Force features a new universal mounting system that allows installation between grip and master cylinder and goes above the handlebar. This will make most of the space available and maximize protection. MX Force is highly ventilated and has a lightweight design, with clean and straightforward lines that will match any modern motorbike. It will provide the needed coverage for hands and master cylinders in any situation.

The MX Force is also adjustable horizontally in 2 different positions.

Polisport Hand Guard MX Force + Universal Plastic Mounting Kit - Orange



8308700003 - Orange

[Read More](#)

SKU:

Price: ₹4,000.00

Categories: [Hand Guards](#)

Product Description

Polisport Hand Guard MX Force & Universal Mounting System
8308700003 - Orange

MX Force features a new universal mounting system that allows installation between grip and master cylinder and goes above the handlebar. This will make most of the space available and maximize protection. MX Force is highly ventilated and has a lightweight design, with clean and straightforward lines that will match any modern motorbike. It will provide the needed coverage for hands and master cylinders in any situation. The MX Force is also adjustable horizontally in 2 different positions.



Puig Dark Smoke Windscreen Honda 1100 Africa Twin

3818F

[Read More](#)

SKU:

Price: ₹14,300.00

Categories: [Windscreen](#)

Product Description

PUIG WINDSHIELD Dark Smoked 3818F Renew the image of your bike with the New Generation Sport windscreen from Puig. Manufactured in 3mm methacrylate, a material that guarantees high resistance to possible impacts and provides great aerodynamic capacity. The product has been tested in the wind tunnel, achieving the best results. Puig has taken into account the diversity of this style of motorcycle and has a model for each of the most current motorcycles. The assembly of the piece is an easy task and fits perfectly to the machine. To facilitate the assembly, Puig serves together with the fairing instructions for coupling.

Puig Dark Smoke Windscreen Honda CBR 650R

3568F

[Read More](#)

SKU:

Price: ₹10,100.00

Categories: [Windscreen](#)



Product Description

PUIG WINDSHIELD Dark Smoked 3568F Renew the image of your bike with the New Generation Sport windscreen from Puig. Manufactured in 3mm methacrylate, a material that guarantees high resistance to possible impacts and provides great aerodynamic capacity. The product has been tested in the wind tunnel, achieving the best results. Puig has taken into account the diversity of this style of motorcycle and has a model for each of the most current motorcycles. The assembly of the piece is an easy task and fits perfectly to the machine. To facilitate the assembly, Puig serves together with the fairing instructions for coupling.

Puig Light Smoke Windscreen Honda CBR 650R



3568H

[Read More](#)

SKU:

Price: ₹10,100.00

Categories: [Windscreen](#)

Product Description

PUIG WINDSHIELD Light Smoked 3568H Renew the image of your bike with the New Generation Sport windscreen from Puig. Manufactured in 3mm methacrylate, a material that guarantees high resistance to possible impacts and provides great aerodynamic capacity. The product has been tested in the wind tunnel, achieving the best results. Puig has taken into account the diversity of this style of motorcycle and has a model for each of the most current motorcycles. The assembly of the piece is an easy task and fits perfectly to the machine. To facilitate the assembly, Puig serves together with the fairing instructions for coupling.

Puig Red Windscreen Honda CBR 650R



3568R

[Read More](#)

SKU:

Price: ₹11,200.00

Categories: [Windscreen](#)

Product Description

PUIG WINDSHIELD Red 3568R Renew the image of your bike with the New Generation Sport

windscreen from Puig. Manufactured in 3mm methacrylate, a material that guarantees high resistance to possible impacts and provides great aerodynamic capacity. The product has been tested in the wind tunnel, achieving the best results. Puig has taken into account the diversity of this style of motorcycle and has a model for each of the most current motorcycles. The assembly of the piece is an easy task and fits perfectly to the machine. To facilitate the assembly, Puig serves together with the fairing instructions for coupling.



Rizoma Stealth Rear View Mirror Pair Black Honda CBR 1000RR

BSS031B

[Read More](#)

SKU:

Price: ₹49,000.00

Categories: [Mirrors](#)

Product Description

Rizoma Stealth Rear View Mirror BSS031B Out of the interface between racing experience and aeronautical inspiration comes a new mirror: Stealth, an accessory specifically designed for supersport bikes. It consists of a fixed part, which allows the fitting directly to the fairing, and a movable part, which acts as a mirror glass holder. Thanks to a rotating system, by a simple movement, the two parts get aligned: in closed position the mirror becomes an aerodynamic foil. While the mirror glass holder is always the same, the fixed component is designed ad hoc for each supersport bikes for which Stealth was developed, looking for the best solution to match the relative aerodynamic results. Made of billet aluminum, it has a convex glass surface to provide a wider viewing angle and is available in three different anodized colors. Stealth's design, with its wing-like shape and 25° angle relative to the ground, give it a linear look, ensure it generates downforce, in turn improving the bike's grip and handling performance, especially at high speed. Downforce pressure is around 4 kg at 300 km/h. The ergonomics has been optimized as well: when the rider takes a sporty riding position, the mirrors are aligned with the rider's eye level. In this way, the rider does not have to raise his position to get a correct rear view, keeping the head protected by the headlight fairing and, therefore, by the pressure that impacts the face at high speed.



Rizoma Stealth Rear View Mirror Pair Dark Grey Honda CBR 1000RR

BSS031D

[Read More](#)

SKU:

Price: ₹49,000.00

Categories: [Mirrors](#)

Product Description

Rizoma Stealth Rear View Mirror BSS031D Out of the interface between racing experience and aeronautical inspiration comes a new mirror: Stealth, an accessory specifically designed for supersport bikes. It consists of a fixed part, which allows the fitting directly to the fairing, and a movable part, which acts as a mirror glass holder. Thanks to a rotating system, by a simple movement, the two parts get aligned: in closed position the mirror becomes an aerodynamic foil. While the mirror glass holder is always the same, the fixed component is designed ad hoc for each supersport bikes for which Stealth was developed, looking for the best solution to match the relative aerodynamic results. Made of billet aluminum, it has a convex glass surface to provide a wider viewing angle and is available in three different anodized colors. Stealth's design, with its wing-like shape and 25° angle relative to the ground, give it a linear look, ensure it generates downforce, in turn improving the bike's grip and handling performance, especially at high speed. Downforce pressure is around 4 kg at 300 km/h. The ergonomics has been optimized as well: when the rider takes a sporty riding position, the mirrors are aligned with the rider's eye level. In this way, the rider does not have to raise his position to get a correct rear view, keeping the head protected by the headlight fairing and, therefore, by the pressure that impacts the face at high speed.



Rizoma Stealth Rear View Mirror Pair Silver Honda CBR 1000RR

BSS031A

[Read More](#)

SKU:

Price: ₹49,000.00

Categories: [Mirrors](#)

Product Description

Rizoma Stealth Rear View Mirror BSS031A Out of the interface between racing experience and aeronautical inspiration comes a new mirror: Stealth, an accessory specifically designed for supersport bikes. It consists of a fixed part, which allows the fitting directly to the fairing, and a movable part, which acts as a mirror glass holder. Thanks to a rotating system, by a simple movement, the two parts get aligned: in closed position the mirror becomes an aerodynamic foil. While the mirror glass holder is always the same, the fixed component is designed ad hoc for each supersport bikes for which Stealth was developed, looking for the best solution to match the relative aerodynamic results. Made of billet aluminum, it has a convex glass surface to provide a wider viewing angle and is available in three different anodized colors. Stealth's design, with its wing-like shape and 25° angle relative to the ground, give it a linear look, ensure it generates downforce, in turn improving the bike's grip and handling performance, especially at high speed. Downforce pressure is around 4 kg at 300 km/h. The ergonomics has been optimized as well: when the rider takes a sporty riding position, the mirrors are aligned with the rider's eye level. In this way, the rider does not have to raise his position to get a correct rear view, keeping the head protected by the headlight fairing and, therefore, by the pressure that impacts the face at high speed.



SC-Project GP Tech Carbon Fiber Muffler Honda CBR 650R

D04B-28C

[Read More](#)

SKU:

Price: ₹75,000.00

Categories: [Exhausts](#)

Product Description

For the first time ever in India!!

SC Project has created for Lanesplit a custom Carbon Fiber Muffler for the 300 - 1300cc bike segment, only for the India market. This product is not available anywhere else. The slip-on exhaust fits a wide variety of bikes (details in additional information). May need an additional link pipe, depending on bike model. Please contact us for any query. This product is limited to only 1 piece per customer. This is not a dual exhaust. Only 1 muffler included.

*** Picture is for representation and illustration only.**

The GP-TECH muffler characterized by its round and simple shape gives a sporty and attractive line to your motorbike. The GP-TECH is distinguished by the sporty exhaust end cap carbon fiber Twill. The visible welding with T.I.G. technology and the insert bushings made in CNC allow the silencer to be an added value. The muffler is equipped the DB-Killer and is approved for road use. In the kit are included the steel clamps with anti-vibration rubber for to install the silencers.

Specially produced for Lanesplit

Matte Carbon Fiber Sleeve Matte Carbon Fiber Cap Sleeve Dia 98mm Sleeve Length 280mm Inlet diameter 52mm Internal Dia 52mm Support Bracket Removable dB-Killer



Sprint Air Filter Honda 1100 Africa Twin

PM204S Please note that this package contains 2 filters.

[Read More](#)

SKU:

Price: ₹20,500.00

Categories: [Air Filters](#)

Product Description

Sprint Filter P08 is a standard performance air filter, ideal for street legal use or track day. Sprint Filter P08 uses a special polyester filtering media with a wire diameter of only 70

microns. Its unique weave pattern can filter debris as small as 80 microns while having the highest permeability for any other air filter brand on the market. The increased airflow of the P08 air filter will help maximize your motorcycle power potential while offering excellent filtration protection. Minimal maintenance Remove the filter from the airbox, blow it clean with compressed air, and reinsert it. No washing, cleaning or oil treatment needed. Product lifecycle The P08's polyester material will display no deterioration or loss of structure or performance if looked after with care.

Sprint Air Filter Honda CBR 1000RR

PM58S

[Read More](#)

SKU:

Price: ₹12,000.00

Categories: [Air Filters](#)



Product Description

Sprint Filter P08 is a standard performance air filter, ideal for street legal use or track day. Sprint Filter P08 uses a special polyester filtering media with a wire diameter of only 70 microns. Its unique weave pattern can filter debris as small as 80 microns while having the highest permeability for any other air filter brand on the market. The increased airflow of the P08 air filter will help maximize your motorcycle power potential while offering excellent filtration protection. Minimal maintenance Remove the filter from the airbox, blow it clean with compressed air, and reinsert it. No washing, cleaning or oil treatment needed. Product lifecycle The P08's polyester material will display no deterioration or loss of structure or performance if looked after with care.

Sprint Air Filter Honda CBR 1000RR



PM158S

[Read More](#)

SKU:

Price: ₹12,400.00

Categories: [Air Filters](#)

Product Description

Sprint Filter P08 is a standard performance air filter, ideal for street legal use or track day. Sprint Filter P08 uses a special polyester filtering media with a wire diameter of only 70 microns. Its unique weave pattern can filter debris as small as 80 microns while having the highest permeability for any other air filter brand on the market. The increased airflow of the P08 air filter will help maximize your motorcycle power potential while offering excellent filtration protection. Minimal maintenance Remove the filter from the airbox, blow it clean with compressed air, and reinsert it. No washing, cleaning or oil treatment needed. Product lifecycle The P08's polyester material will display no deterioration or loss of structure or performance if looked after with care.

Sprint Air Filter Honda CBR 1000RR



PM177S

[Read More](#)

SKU:

Price: ₹13,500.00

Categories: [Air Filters](#)

Product Description

Sprint Filter P08 is a standard performance air filter, ideal for street legal use or track day. Sprint Filter P08 uses a special polyester filtering media with a wire diameter of only 70 microns. Its unique weave pattern can filter debris as small as 80 microns while having the highest permeability for any other air filter brand on the market. The increased airflow of the

P08 air filter will help maximize your motorcycle power potential while offering excellent filtration protection. Minimal maintenance Remove the filter from the airbox, blow it clean with compressed air, and reinsert it. No washing, cleaning or oil treatment needed. Product lifecycle The P08's polyester material will display no deterioration or loss of structure or performance if looked after with care.



STM Slipper Clutch Honda CBR 1000RR

FHN-S170

[Read More](#)

SKU:

Price: ₹117,000.00

Categories: [Clutches](#)

Product Description

Product Detail

Anti-Slip Oil Bath Clutch

From the classic line of Slipper clutches for Ducati motorcycles, mechanical machining is performed starting from full with the most modern numerical control machines (CNC) on various materials: ergal, anticorodal, stainless steel, titanium.



WRS Race High Windscreen Light Smoke Honda CBR 1000RR

HO034F

[Read More](#)

SKU:

Price: ₹11,400.00

Categories: [Windscreen](#)

Product Description

WRS Race High Windscreen Color: Light Smoked Code: HO034F Windscreen made of high quality PMMA plexiglass DOT626 approved, the same material we use for the realization of the screens dedicated to the MotoGP and Superbike world championships. A thickness of only 2 mm was used to maintain excellent lightness and flexibility of the product, making it considerably more resistant to shocks in the event of a fall. This windshield is ideal for those who want to obtain greater coverage from the air while driving without altering the aerodynamics. Made following the strictest safety standards and respecting the know-how, which guarantees maximum resistance and transparency. The design, studied in detail, fits perfectly with the line of the motorcycle, giving it an even more captivating appearance.



WRS Race High Windscreen Light Smoke Honda CBR 650R

HO035F

[Read More](#)

SKU:

Price: ₹11,000.00

Categories: [Windscreen](#)

Product Description

WRS Race High Windscreen Color: Light Smoked Code: HO035F Windscreen made of high quality PMMA plexiglass DOT626 approved, the same material we use for the realization of the screens dedicated to the MotoGP and Superbike world championships. A thickness of only 2 mm was used to maintain excellent lightness and flexibility of the product, making it considerably more resistant to shocks in the event of a fall. This windshield is ideal for those who want to

obtain greater coverage from the air while driving without altering the aerodynamics. Made following the strictest safety standards and respecting the know-how, which guarantees maximum resistance and transparency. The design, studied in detail, fits perfectly with the line of the motorcycle, giving it an even more captivating appearance.
