



## Aella Front Fork Slider Kawasaki Ninja 1000

AE-68036

[Read More](#)

**SKU:**

**Price:** ₹11,500.00

**Categories:** [Protectors](#)

### Product Description

Aella Front Fork Slider AE-68036 Japan's most famous accessories and special parts company has teamed up with Lanesplit. Introducing Aella's front fork sliders for the Kawasaki Ninja 1000. These are hand crafted in Japan. The slider is designed to match the inner rotor of the brake and protects tightly protects up to the axle nut.

---



## Aella Front Fork Slider Kawasaki Z 900

AE-68034

[Read More](#)

**SKU:**

**Price:** ₹11,500.00

**Categories:** [Protectors](#)

### Product Description

Aella Front Fork Slider AE-68034 Japan's most famous accessories and special parts company has teamed up with Lanesplit. Introducing Aella's front fork sliders for the Kawasaki Z 900. These are hand crafted in Japan. The slider is designed to match the inner rotor of the brake and protects tightly protects up to the axle nut.

---



## Aella Front Fork Slider Kawasaki ZX-4R

AE-68037

[Read More](#)

**SKU:**

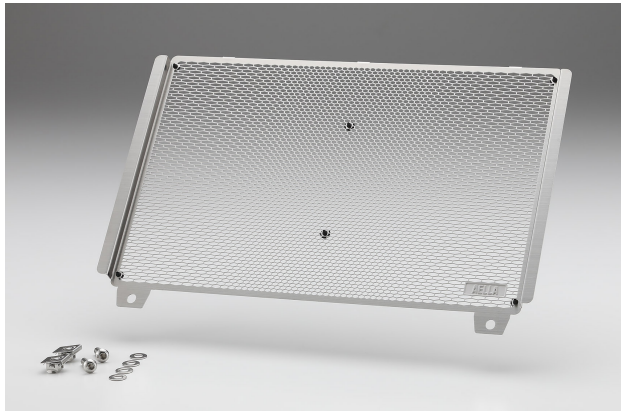
**Price:** ₹9,300.00

**Categories:** [Protectors](#)

### Product Description

Aella Front Fork Slider AE-68037 Japan's most famous accessories and special parts company has teamed up with Lanesplit. Introducing Aella's front fork sliders for the Kawasaki ZX-4R. These are hand crafted in Japan. It protects the front fork and it helps to reduce the falling damage.

---



## Aella Radiator Guard Kawasaki ZX-4R

AE-56042

[Read More](#)

**SKU:**

**Price:** ₹16,700.00

**Categories:** [Protectors](#)

### Product Description

Aella Radiator Guard AE-56042 Japan's most famous accessories and special parts company has teamed up with Lanesplit. Introducing Aella's radiator guard for the Kawasaki ZX-4R. These are hand crafted in Japan. Aella's unique stepless wave pattern is a pattern that has both a cooling effect and a protection effect. Fine meshes with a high protective effect are placed in the central part where the front wheels are often wound up, and coarse meshes are placed in the part where the running wind on both sides hits well so as not to impair the cooling effect. Hairline treatment is applied to the surface so that fine scratches are not noticeable.

---



## Aella Rear Spools Kawasaki Z 900

AE-68035

[Read More](#)

**SKU:**

**Price:** ₹6,800.00

**Categories:** [Protectors](#)

### Product Description

Aella Rear Spools AE-68035 Japan's most famous accessories and special parts company has teamed up with Lanesplit. Introducing Aella's rear spools for the Kawasaki Z 900. These are hand crafted in Japan. The spools are available in red and blue according to vehicle body color, with laser logo etched on the body

---



## Bonamici Racing Fuel Tank Cap Kawasaki ZX 10R

FC170

[Read More](#)

**SKU:**

**Price:** ₹14,000.00

**Categories:** [Fuel Tank Cap](#)



### Product Description

Bonamici Racing Fuel Tank Cap

FC170 Color: Black Material: Aluminum Bonamici Racing tank cap completely in billet aluminum with subsequent surface anodization. The quick-closing cap will allow faster refueling without using the ignition key. Simple to install and requires no modification for correct assembly.

**NOTE: The tank cap and all the small parts necessary for correct assembly are included in the package.**

---



## CNC Racing Evo Bar-end Mirror Pair Kawasaki Ninja 650 / Z 650

MR711B + MR712B

[Read More](#)

**SKU:**

**Price:** ₹23,000.00

**Categories:** [Mirrors](#)

### Product Description

CNC Racing Evo Bar-end Mirror Pair MR711B + MR712B Bar-end rear view mirrors made entirely from solid light alloy with subsequent surface anodization. Compatible with most of the handlebars, original and not, through expansion mounting system (handlebar internal diameter Ø 13.5 / 19 mm) or with M6 screw, supplied in the package; it can be mounted in high or low position. The CV001 U-bolt can be combined with the mirror on OEM Brembo pumps.

**UNIVERSAL PRODUCT: before purchasing, check the possibility of correct assembly at a specialized workshop**

---



## CNC Racing Rocket Bar-end Mirror Pair Kawasaki Ninja 650 / Z 650

MR701B + MR702B

[Read More](#)

**SKU:**

**Price:** ₹22,000.00

**Categories:** [Mirrors](#)

### Product Description

CNC Racing Rocket Bar-end Mirror Pair MR701B + MR702B Bar-end mirror, machined from light alloy billet and then given an anodized surface finish. The useful area extends on an 81mm diameter, to ensure the best possible visibility. The mirror can be fitted in either low or high position and is compatible with most handlebars, both original and non, with an expansion assembly system (handlebar internal diameter Ø 13.5/19 mm) or with a M6 screw, included in

the package. It is suggested to purchase our Brembo master cylinder clamp CV001.

**UNIVERSAL PRODUCT: before purchasing, check the possibility of correct assembly at a specialized workshop**

---



## Lightech Aluminum Wheel Valve Cap Black - All Kawasaki Models

VALNER

[Read More](#)

**SKU:**

**Price:** ₹400.00

**Categories:** [Accessories](#), [Valve Caps](#)

### Product Description

VALNER Wheel valve cap aluminum - Black color Make your wheels look different with Lightech Aluminum metal valve caps. Universal fit and lasts longer than the plastic caps. Individually sold - buy a pair for front and rear wheels

---



## Lightech Aluminum Wheel Valve Cap Silver - All Kawasaki Models

VALSIL

[Read More](#)

**SKU:**

**Price:** ₹400.00

**Categories:** [Accessories](#), [Valve Caps](#)

### Product Description

VALSIL Wheel valve cap aluminum - Silver color Make your wheels look different with Lightech Aluminum metal valve caps. Universal fit and lasts longer than the plastic caps. Individually sold - buy a pair for front and rear wheels

---

## Lightech Brake / Clutch Master Cylinder Cover Kawasaki Z 900 - Black

FBC16NER

[Read More](#)

**SKU:**

**Price:** ₹3,000.00

**Categories:** [Brake / Clutch Reservoir Cover](#)



### Product Description

FBC16NER

---

## Lightech Brake / Clutch Master Cylinder Cover Kawasaki Z 900 - Green

FBC16VER

[Read More](#)

**SKU:**

**Price:** ₹3,000.00

**Categories:** [Brake / Clutch Reservoir Cover](#)



### Product Description

FBC16VER

---



## Lighttech Brake / Clutch Master Cylinder Cover Kawasaki Z 900 - Red

FBC16ROS

[Read More](#)

**SKU:**

**Price:** ₹3,000.00

**Categories:** [Brake / Clutch Reservoir Cover](#)

### Product Description

FBC16ROS

---



## Lighttech Brake / Clutch Master Cylinder Cover Kawasaki ZX 10R - Black

FBC04NER

[Read More](#)

**SKU:**

**Price:** ₹3,000.00

**Categories:** [Brake / Clutch Reservoir Cover](#)

### Product Description

FBC04NER

---



## Lighttech Brake / Clutch Master Cylinder Cover Kawasaki ZX 10R - Cobalt

FBC04COB

[Read More](#)

**SKU:**

**Price:** ₹3,000.00

**Categories:** [Brake / Clutch Reservoir Cover](#)

### Product Description

FBC04COB



## Lighttech Brake / Clutch Master Cylinder Cover Kawasaki ZX 10R - Gold

FBC04ORO

[Read More](#)

**SKU:**

**Price:** ₹3,000.00

**Categories:** [Brake / Clutch Reservoir Cover](#)

### Product Description

FBC04ORO





## Lighttech Brake / Clutch Master Cylinder Cover Kawasaki ZX 10R - Green

FBC04VER

[Read More](#)

**SKU:**

**Price:** ₹3,000.00

**Categories:** [Brake / Clutch Reservoir Cover](#)

### Product Description

FBC04VER

---



## Lighttech Brake / Clutch Master Cylinder Cover Kawasaki ZX 10R - Red

FBC04ROS

[Read More](#)

**SKU:**

**Price:** ₹3,000.00

**Categories:** [Brake / Clutch Reservoir Cover](#)

### Product Description

FBC04ROS

---



## Lightech Brake / Clutch Master Cylinder Cover Kawasaki ZX 10R - Silver

FBC04SIL

[Read More](#)

**SKU:**

**Price:** ₹3,000.00

**Categories:** [Brake / Clutch Reservoir Cover](#)

### Product Description

FBC04SIL

---



## Lightech Brake Lever Adaptor Kawasaki Z 900

KPL304

[Read More](#)

**SKU:**

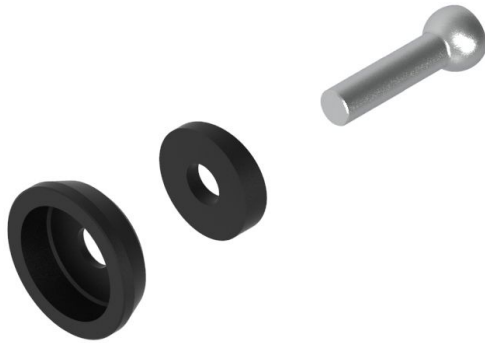
**Price:** ₹2,700.00

**Categories:** [Protectors](#)

### Product Description

KPL304 Adaptor for brake lever guard. Bought separately with the lever guard. Required for installation

---



## Lighttech Brake Lever Adaptor Kawasaki ZX 10R

KPL304

[Read More](#)

**SKU:**

**Price:** ₹2,700.00

**Categories:** [Protectors](#)

### Product Description

KPL304 Adaptor for brake lever guard. Bought separately with the lever guard. Required for installation

---



## Lighttech Brake Lever Protector with Gold Guard End Kawasaki Z900

ISS113RAORO

[Read More](#)

**SKU:**

**Price:** ₹16,700.00

**Categories:** [Protectors](#)

### Product Description

ISS113RAORO Aluminum Brake Lever Guard - Axle Base 132 mm / Anodized Guard end / Gold

---



## Lighttech Brake Lever Protector with Gold Guard End Kawasaki ZX 10R

ISS113RAORO

[Read More](#)

**SKU:**

**Price:** ₹16,700.00

**Categories:** [Protectors](#)

### Product Description

ISS113RAORO Aluminum Brake Lever Guard - Axle Base 132 mm / Anodized Guard end / Gold

---



## Lighttech Brake Lever Protector with Green Guard End Kawasaki Z 900

ISS113RAVER

[Read More](#)

**SKU:**

**Price:** ₹12,700.00

**Categories:** [Protectors](#)

### Product Description

ISS113RAVER Aluminum Brake Lever Guard - Axle Base 132 mm / Anodized Guard end / Green

---



## Lighttech Brake Lever Protector with Green Guard End Kawasaki ZX 10R

ISS113RAVER

[Read More](#)

**SKU:**

**Price:** ₹12,700.00

**Categories:** [Protectors](#)

### Product Description

ISS113RAVER Aluminum Brake Lever Guard - Axle Base 132 mm / Anodized Guard end / Green

---



## Lighttech Brake Lever Protector with Red Guard End Kawasaki Z900

ISS113RAROS

[Read More](#)

**SKU:**

**Price:** ₹16,700.00

**Categories:** [Protectors](#)

### Product Description

ISS113RAROS Aluminum Brake Lever Guard - Axle Base 132 mm / Anodized Guard end / Red

---



## Lighttech Brake Lever Protector with Red Guard End Kawasaki ZX 10R

ISS113RAROS

[Read More](#)

**SKU:**

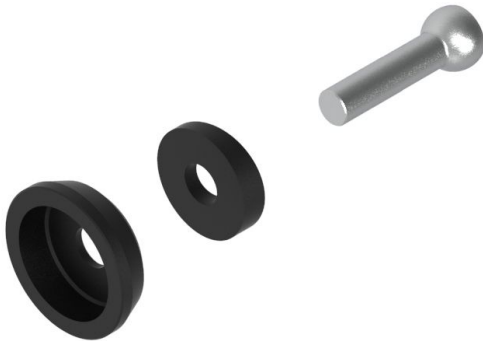
**Price:** ₹16,700.00

**Categories:** [Protectors](#)

### Product Description

ISS113RAROS Aluminum Brake Lever Guard - Axle Base 132 mm / Anodized Guard end / Red

---



## Lighttech Clutch Lever Adaptor Kawasaki Z 900

KPL304

[Read More](#)

**SKU:**

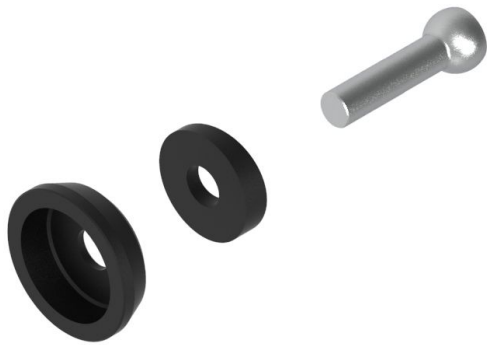
**Price:** ₹2,700.00

**Categories:** [Protectors](#)

### Product Description

KPL304 Adaptor for clutch lever guard. Bought separately with the lever guard. Required for installation

---



## Lighttech Clutch Lever Adaptor Kawasaki ZX 10R

KPL304

[Read More](#)

**SKU:**

**Price:** ₹2,700.00

**Categories:** [Protectors](#)

### Product Description

KPL304 Adaptor for clutch lever guard. Bought separately with the lever guard. Required for installation

---



## Lighttech Fender Eliminator Kawasaki Z900

KTARKA123

[Read More](#)

**SKU:**

**Price:** ₹15,500.00

**Categories:** [Fender Eliminator](#)

### Product Description

**KTARKA123**

Kawasaki Z900 Fender Eliminator Kit Wil fit OEM turn signals

---



## Lightech Front Fork Slider Black Kawasaki Ninja 1000

WAPKA406NER

[Read More](#)

**SKU:**

**Price:** ₹6,100.00

**Categories:** [Protectors](#)

### Product Description

Wheel Axle Protection Kit

WAPKA406NER

---



## Lightech Front Fork Slider Black Kawasaki Ninja 1000

WAPKA406NER

[Read More](#)

**SKU:**

**Price:** ₹6,100.00

**Categories:** [Protectors](#)

### Product Description

Wheel Axle Protection Kit

WAPKA406NER

---





## Lightech Front Fork Slider Green Kawasaki Ninja 1000

WAPKA406VER

[Read More](#)

**SKU:**

**Price:** ₹6,100.00

**Categories:** [Protectors](#)

### Product Description

Wheel Axle Protection Kit

WAPKA406VER

---

## Lightech Integrated Turn Signal & Rear Stop Light Pair - All Kawasaki Models



FRE923NER

[Read More](#)

**SKU:**

**Price:** ₹6,600.00

**Categories:** [Turn Signals](#)

### Product Description

FRE923NER

---



## Lightech Rear Spool Black - All Kawasaki Models

CAVM8NER

[Read More](#)

**SKU:**

**Price:** ₹2,800.00

**Categories:** [Rear Spools](#)

### Product Description

Lightech Rear Spool CAVM8NER Pair of Lightech tripod supports with specific M8 attack. Thanks to these supports you can use the lift stands with fork attachments. Compatible with both front and rear stands.

---



## Lightech Sequential Turn Signal Pair - All Kawasaki Models

FRE925NER

[Read More](#)

**SKU:**

**Price:** ₹6,600.00

**Categories:** [Turn Signals](#)

### Product Description

FRE925NER

---



## One Design Tank Pad

CGAN135P

[Read More](#)

**SKU:** Tank pad

**Price:** ₹2,500.00

**Categories:** [Tank Pad](#)

### Product Description

One Design Tank Pad CGAN135P **Product Detail** Tank protector suitable for medium and large tanks. The protector differentiates itself for its unmistakable matt effect and soft touch sensation. The material protects the tank against scratches from jacket zippers, belt buckles, buttons and clothes. Color: Matt Black Carbon Material: Sponge Dimensions: 134 x 230 mm

---



## Over Racing Front Fork Slider Kawasaki Ninja 1000

59-792-02

[Read More](#)

**SKU:**

**Price:** ₹11,000.00

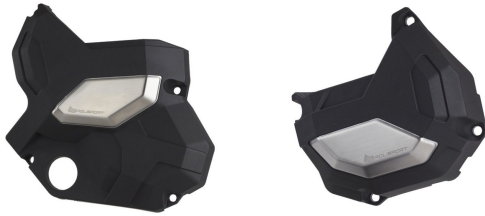
**Categories:** [Protectors](#)

### Product Description

Over Racing Front Fork Slider 59-792-02 Our first corporate partner and one of Suzuka's oldest Japanese parts maker, Over Racing has teamed up again to launch accessories and aftermarket parts for India. Introducing Over Racing front fork sliders for the Kawasaki Ninja 1000.

---

# Polisport Clutch & Alternator Cover Kawasaki Ninja 650 / Z 650 - Black



91107 - Black

[Read More](#)

**SKU:**

**Price:** ₹20,000.00

**Categories:** [Clutch Cover](#), [Protectors](#)

## Product Description

### Polisport Clutch & Alternator Cover

Polisport Engine Cover Protectors were designed to be the best protections in the market. Through research and development, we found the best materials to protect the engine from crashes and falls. We used a blend of highly resistant plastic with over-injected metallic parts to increase the protection level. We also took design seriously, with a minimalistic but high-tech approach, never forgetting function, which is the crux of our product.

91107 - Black Function Highly resistant protection of the engine cover against stone strikes and damage from falls or impacts when handling the bike Impact-absorbing rubber inserts positioned to cushion the contact between part and engine cover Perfect shape to perfectly fit your bike model. Small gap between standard cover and protection Rubber inserts allow a more even force distribution High-quality hardware Rubber inserts are resistant to high temperatures Technology Highly resistant plastic polymer to protect against falls and impacts Over-injected metal part strategically positioned to enhance protection in the event of a crash High-quality precision manufacture with over-injected impact-absorbing rubber inserts and over-injected stainless-steel insert Other Features Mounting kit included Fast and easy installation and removal Engraved metallic part with Polisport logo Texturized surface for a premium look Minimal design to blend into motorcycle look Developed and made in Europe Packaging Packed in recycled carton box Includes one Clutch and Alternator Cover Protector Includes all material needed for an easy installation

---

# Polisport Clutch & Alternator Cover Kawasaki Z 900 - Black



91106 - Black

[Read More](#)

**SKU:**

**Price:** ₹17,000.00

**Categories:** [Clutch Cover](#), [Protectors](#)

## Product Description

### Polisport Clutch & Alternator Cover

Polisport Engine Cover Protectors were designed to be the best protections in the market. Through research and development, we found the best materials to protect the engine from crashes and falls. We used a blend of highly resistant plastic with over-injected metallic parts to increase the protection level. We also took design seriously, with a minimalistic but high-tech approach, never forgetting function, which is the crux of our product.

91106 - Black Function Highly resistant protection of the engine cover against stone strikes and damage from falls or impacts when handling the bike Impact-absorbing rubber inserts positioned to cushion the contact between part and engine cover Perfect shape to perfectly fit your bike model. Small gap between standard cover and protection Rubber inserts allow a more even force distribution High-quality hardware Rubber inserts are resistant to high temperatures Technology Highly resistant plastic polymer to protect against falls and impacts Over-injected metal part strategically positioned to enhance protection in the event of a crash High-quality precision manufacture with over-injected impact-absorbing rubber inserts and over-injected stainless-steel insert Other Features Mounting kit included Fast and easy installation and removal Engraved metallic part with Polisport logo Texturized surface for a premium look Minimal design to blend into motorcycle look Developed and made in Europe Packaging Packed in recycled carton box Includes one Clutch and Alternator Cover Protector Includes all material needed for an easy installation

---



## Puig Front Fork Protectors Kawasaki Ninja 1000SX

20027N

[Read More](#)

**SKU:**

**Price:** ₹6,000.00

**Categories:** [Protectors](#)

### Product Description

Puig Front Fork Protectors 20027N Front fork protectors to keep your bike forks safe from any falls or drops.

---



## R&G Front Fender Extension Black Kawasaki Ninja 650 / Z 650

FERG0341BK

[Read More](#)

**SKU:**

**Price:** ₹5,000.00

**Categories:** [Accessories](#)

### Product Description

R&G Front Fender Extension FERG0341BK Color : Black R&G Fender Extenders offer additional protection to front-mounted coolers, downpipes and fairing panels from debris, road grit, mud and water kicked up by the front wheel. Attaching to the motorcycle's front mud guard / fender via included adhesive strips and push rivets, installation takes only minutes. Designed to mate exactly to the front mud guard / fender, thanks to the latest 3D scanning technologies. Each design is bespoke to its intended fender and offers tailored protection for best performance and aesthetics. Made from ABS plastic and available in Black or Carbon Fiber effect finish. **Made in the UK.**

---



## R&G Front Fork Slider Kawasaki Ninja 650 / Z 650

FP0192BK

[Read More](#)

**SKU:**

**Price:** ₹6,300.00

**Categories:** [Protectors](#)

### Product Description

R&G Front Fork Slider FP0192BK Color : Black These fork protectors are suitable for the Kawasaki Z650 and Ninja 650 models. Easy to install, they simply install onto either side of the spindle connected by a tie bar helping eliminate damage to the front forks, fork bottoms, disc, fork bottoms and brake calipers from a crash or drop or slide.

---



## Rizoma Fuel Tank Cap Kawasaki ZX 10R

TF011B

[Read More](#)

**SKU:**

**Price:** ₹23,500.00

**Categories:** [Fuel Tank Cap](#)

### Product Description

Rizoma Fuel Tank Cap TF011B The Rizoma fuel tank cap is made entirely from billet aluminum and combines design, technology, high quality materials and safety. The Key Lock System reduces the risk of tampering while maintaining ease of installation and use. The two-tone finish is obtained through anodization, which keeps it looking good for longer.

---





## Rizoma Stealth Rear View Mirror Pair Black Kawasaki ZX 10R

BSS060B

[Read More](#)

**SKU:**

**Price:** ₹49,000.00

**Categories:** [Mirrors](#)

### Product Description

Rizoma Stealth Rear View Mirror BSS060B Out of the interface between racing experience and aeronautical inspiration comes a new mirror: Stealth, an accessory specifically designed for supersport bikes. It consists of a fixed part, which allows the fitting directly to the fairing, and a movable part, which acts as a mirror glass holder. Thanks to a rotating system, by a simple movement, the two parts get aligned: in closed position the mirror becomes an aerodynamic foil. While the mirror glass holder is always the same, the fixed component is designed ad hoc for each supersport bikes for which Stealth was developed, looking for the best solution to match the relative aerodynamic results. Made of billet aluminum, it has a convex glass surface to provide a wider viewing angle and is available in three different anodized colors. Stealth's design, with its wing-like shape and 25° angle relative to the ground, give it a linear look, ensure it generates downforce, in turn improving the bike's grip and handling performance, especially at high speed. Downforce pressure is around 4 kg at 300 km/h. The ergonomics has been optimized as well: when the rider takes a sporty riding position, the mirrors are aligned with the rider's eye level. In this way, the rider does not have to raise his position to get a correct rear view, keeping the head protected by the headlight fairing and, therefore, by the pressure that impacts the face at high speed.

---





## Rizoma Stealth Rear View Mirror Pair Dark Grey Kawasaki ZX 10R

BSS060D

[Read More](#)

**SKU:**

**Price:** ₹49,000.00

**Categories:** [Mirrors](#)

### Product Description

Rizoma Stealth Rear View Mirror BSS060D Out of the interface between racing experience and aeronautical inspiration comes a new mirror: Stealth, an accessory specifically designed for supersport bikes. It consists of a fixed part, which allows the fitting directly to the fairing, and a movable part, which acts as a mirror glass holder. Thanks to a rotating system, by a simple movement, the two parts get aligned: in closed position the mirror becomes an aerodynamic foil. While the mirror glass holder is always the same, the fixed component is designed ad hoc for each supersport bikes for which Stealth was developed, looking for the best solution to match the relative aerodynamic results. Made of billet aluminum, it has a convex glass surface to provide a wider viewing angle and is available in three different anodized colors. Stealth's design, with its wing-like shape and 25° angle relative to the ground, give it a linear look, ensure it generates downforce, in turn improving the bike's grip and handling performance, especially at high speed. Downforce pressure is around 4 kg at 300 km/h. The ergonomics has been optimized as well: when the rider takes a sporty riding position, the mirrors are aligned with the rider's eye level. In this way, the rider does not have to raise his position to get a correct rear view, keeping the head protected by the headlight fairing and, therefore, by the pressure that impacts the face at high speed.

---



## Rizoma Stealth Rear View Mirror Pair Silver Kawasaki ZX 10R

BSS060A

[Read More](#)

**SKU:**

**Price:** ₹49,000.00

**Categories:** [Mirrors](#)

## Product Description

Rizoma Stealth Rear View Mirror BSS060A Out of the interface between racing experience and aeronautical inspiration comes a new mirror: Stealth, an accessory specifically designed for supersport bikes. It consists of a fixed part, which allows the fitting directly to the fairing, and a movable part, which acts as a mirror glass holder. Thanks to a rotating system, by a simple movement, the two parts get aligned: in closed position the mirror becomes an aerodynamic foil. While the mirror glass holder is always the same, the fixed component is designed ad hoc for each supersport bikes for which Stealth was developed, looking for the best solution to match the relative aerodynamic results. Made of billet aluminum, it has a convex glass surface to provide a wider viewing angle and is available in three different anodized colors. Stealth's design, with its wing-like shape and 25° angle relative to the ground, give it a linear look, ensure it generates downforce, in turn improving the bike's grip and handling performance, especially at high speed. Downforce pressure is around 4 kg at 300 km/h. The ergonomics has been optimized as well: when the rider takes a sporty riding position, the mirrors are aligned with the rider's eye level. In this way, the rider does not have to raise his position to get a correct rear view, keeping the head protected by the headlight fairing and, therefore, by the pressure that impacts the face at high speed.

---



## RLZ Carbon Fiber Front Fender Kawasaki Z 900

RLZ-FF-KZ9

[Read More](#)

**SKU:**

**Price:** ₹14,990.00

**Categories:** [Carbon Fiber](#)

## Product Description

RLZ Carbon Fiber Front Fender RLZ Carbon Fiber Front Fender is the perfect addition to any motorcycle enthusiast's collection. These high-quality Front Fenders are crafted from durable carbon fiber, ensuring that they can withstand the rigors of the road and provide long-lasting protection for your motorcycle. The sleek design of the panels not only adds a touch of style to your bike but also improves weight reduction. Installation is a breeze thanks to the included mounting hardware and instructions. In no time, you'll be able to transform the look of your motorcycle and take it to the next level. Not only is the Carbon Fiber Front Fender for your Z 900 resistant to rust and corrosion, it is lightweight- making it an excellent choice for riders who

spend a lot of time on the road and track alike. Available in Matt and Glossy Finish. Made with Carbon Fiber reinforced with FRP. Note: This Carbon Fiber Front Fender fits on the stock chassis \* Installation Location – Front Wheel Mount \* Available in - PLAIN & TWILL \* Finishing - MATTE AND GLOSSY \* Mounting – Easy and Quick using bolts from OEM \* Weight – Lighter by minimum of 40% compared to OEM All our Carbon Fiber products are made with top-tier Pre Peg Carbon Fiber and have a UV-Protection Coat.

---



## RLZ Carbon Fiber Heel Guards Kawasaki Z 900

RLZ-HG-KZ9

[Read More](#)

**SKU:**

**Price:** ₹5,990.00

**Categories:** [Carbon Fiber](#)

### Product Description

RLZ Carbon Fiber Heel Guards RLZ Carbon Heel Guards are the perfect addition to any motorcycle enthusiast's collection. These high-quality Heel Guards are crafted from durable carbon fiber, ensuring that they can withstand the rigors of the road and provide long-lasting protection for your motorcycle. The sleek design of the panels not only adds a touch of style to your bike but also improves weight reduction. Installation is a breeze thanks to the included mounting hardware and instructions. In no time, you'll be able to transform the look of your motorcycle and take it to the next level. Not only are the Carbon Fiber Heel Guards for your Z 900 resistant to rust and corrosion, they are lightweight- making them an excellent choice for riders who spend a lot of time on the road and track alike. Available in Matt and Glossy Finish. Made with Carbon Fiber reinforced with FRP. Note: These Carbon Fiber Heel Guards fit on the stock chassis \* Installation Location – Rear Wheel Mount \* Available in - PLAIN & TWILL \* Finishing - MATTE AND GLOSSY \* Mounting – Easy and Quick using bolts from OEM \* Weight – Lighter by minimum of 40% compared to OEM All our Carbon Fiber products are made with top-tier Pre Peg Carbon Fiber and have a UV-Protection Coat.

---



## RLZ Carbon Fiber Lower Side Fairings Kawasaki Z 900

RLZ-FCR-KZ9

[Read More](#)

**SKU:**

**Price:** ₹20,990.00

**Categories:** [Carbon Fiber](#)

### Product Description

RLZ Carbon Fiber Frame Covers RLZ Carbon Fiber Frame Covers are the perfect addition to any motorcycle enthusiast's collection. These high-quality Frame Covers are crafted from durable carbon fiber, ensuring that they can withstand the rigors of the road and provide long-lasting protection for your motorcycle. The sleek design of the panels not only adds a touch of style to your bike but also improves weight reduction. Installation is a breeze thanks to the included mounting hardware and instructions. In no time, you'll be able to transform the look of your motorcycle and take it to the next level. Not only are the Carbon Fiber Frame Covers for your Z 900 resistant to rust and corrosion, they are lightweight- making them an excellent choice for riders who spend a lot of time on the road and track alike. Available in Matt and Glossy Finish. Made with Carbon Fiber reinforced with FRP. Note: These Carbon Fiber Frame Covers fit on the stock chassis \* Installation Location – Rear Wheel Mount \* Available in - PLAIN & TWILL \* Finishing - MATTE AND GLOSSY \* Mounting – Easy and Quick using bolts from OEM \* Weight – Lighter by minimum of 40% compared to OEM All our Carbon Fiber products are made with top-tier Pre Peg Carbon Fiber and have a UV-Protection Coat.



## RLZ Carbon Fiber Rear Fender With Chain Guard Kawasaki Z 900

RLZ-RHC-KZ9

[Read More](#)

**SKU:**

**Price:** ₹18,990.00

**Categories:** [Carbon Fiber](#)



## Product Description

RLZ Carbon Fiber Rear Fender With Chain Guard RLZ Carbon Rear Front Fender is the perfect addition to any motorcycle enthusiast's collection. These high-quality Rear Fenders are crafted from durable carbon fiber, ensuring that they can withstand the rigors of the road and provide long-lasting protection for your motorcycle. The sleek design of the panels not only adds a touch of style to your bike but also improves weight reduction. Installation is a breeze thanks to the included mounting hardware and instructions. In no time, you'll be able to transform the look of your motorcycle and take it to the next level. Not only is the Carbon Fiber Rear Fender for your Z 900 resistant to rust and corrosion, it is lightweight- making it an excellent choice for riders who spend a lot of time on the road and track alike. Available in Matt and Glossy Finish. Made with Carbon Fiber reinforced with FRP. Note: This Carbon Fiber Rear Fender fits on the stock chassis \* Installation Location – Rear Wheel Mount \* Available in - PLAIN & TWILL \* Finishing - MATTE AND GLOSSY \* Mounting – Easy and Quick using bolts from OEM \* Weight – Lighter by minimum of 40% compared to OEM All our Carbon Fiber products are made with top-tier Pre Peg Carbon Fiber and have a UV-Protection Coat.

---



## Stompgrip Anti-Slip Tank Grip Black Kawasaki Ninja 300

55-10-0043B

[Read More](#)

**SKU:**

**Price:** ₹7,000.00

**Categories:** [Tank Grip](#)

## Product Description

Stompgrip Anti-Slip Tank Grip

55-10-0043B

Color: Black

Pre-formed stickers for all road and off-road motorcycles that improve grip on the tank, helping

the body in both braking and cornering situations, without damaging the graphics of the bike that remain, in the transparent version, however visible. Stompgrip anti-slip grips are used by the best MotoGP and Superbike teams. Stompgrip is an American company, which offers a very high level product using high quality materials. Available in two colors: Transparent or Black.

---



## Stompgrip Anti-Slip Tank Grip Black Kawasaki ZX 10R

55-10-0040B

[Read More](#)

**SKU:**

**Price:** ₹7,000.00

**Categories:** [Tank Grip](#)

### Product Description

Stompgrip Anti-Slip Tank Grip 55-10-0040B Color: Black Pre-formed stickers for all road and off-road motorcycles that improve grip on the tank, helping the body in both braking and cornering situations, without damaging the graphics of the bike that remain, in the transparent version, however visible. Stompgrip anti-slip grips are used by the best MotoGP and Superbike teams. Stompgrip is an American company, which offers a very high level product using high quality materials. Available in two colors: Transparent or Black.

---



## Stompgrip Anti-Slip Tank Grip Clear Kawasaki Ninja 300

55-10-0043C

[Read More](#)

**SKU:**

**Price:** ₹7,000.00

**Categories:** [Tank Grip](#)

### Product Description

Stompgrip Anti-Slip Tank Grip

55-10-0043C

Color: Clear

Pre-formed stickers for all road and off-road motorcycles that improve grip on the tank, helping the body in both braking and cornering situations, without damaging the graphics of the bike that remain, in the transparent version, however visible. Stompgrip anti-slip grips are used by the best MotoGP and Superbike teams. Stompgrip is an American company, which offers a very high level product using high quality materials. Available in two colors: Transparent or Black.

---



## Stompgrip Anti-Slip Tank Grip Clear Kawasaki ZX 10R

55-10-0040C

[Read More](#)

**SKU:**

**Price:** ₹7,000.00

**Categories:** [Tank Grip](#)

### Product Description

StompGrip Anti-Slip Tank Grip 55-10-0040C Color: Clear Pre-formed stickers for all road and off-road motorcycles that improve grip on the tank, helping the body in both braking and cornering situations, without damaging the graphics of the bike that remain, in the transparent version, however visible. StompGrip anti-slip grips are used by the best MotoGP and Superbike teams. StompGrip is an American company, which offers a very high level product using high quality materials. Available in two colors: Transparent or Black.

---