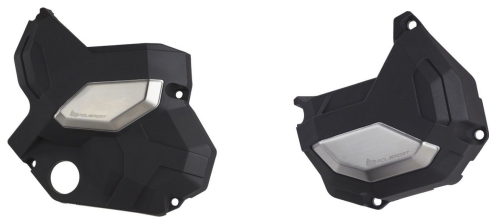


# Polisport Clutch & Alternator Cover Kawasaki Ninja 650 / Z 650 - Black



91107 - Black

[Read More](#)

**SKU:**

**Price:** ₹20,000.00

**Categories:** [Clutch Cover](#), [Protectors](#)

## Product Description

Polisport Clutch & Alternator Cover

Polisport Engine Cover Protectors were designed to be the best protections in the market. Through research and development, we found the best materials to protect the engine from crashes and falls. We used a blend of highly resistant plastic with over-injected metallic parts to increase the protection level. We also took design seriously, with a minimalistic but high-tech approach, never forgetting function, which is the crux of our product.

91107 - Black Function Highly resistant protection of the engine cover against stone strikes and damage from falls or impacts when handling the bike Impact-absorbing rubber inserts positioned to cushion the contact between part and engine cover Perfect shape to perfectly fit your bike model. Small gap between standard cover and protection Rubber inserts allow a more even force distribution High-quality hardware Rubber inserts are resistant to high temperatures Technology Highly resistant plastic polymer to protect against falls and impacts Over-injected metal part strategically positioned to enhance protection in the event of a crash High-quality precision manufacture with over-injected impact-absorbing rubber inserts and over-injected stainless-steel insert Other Features Mounting kit included Fast and easy installation and removal Engraved metallic part with Polisport logo Texturized surface for a premium look Minimal design to blend into motorcycle look Developed and made in Europe Packaging Packed in recycled carton box Includes one Clutch and Alternator Cover Protector Includes all material needed for an easy installation

---