



## Akrapovic Titanium Full System Exhaust Kawasaki Ninja 650 / Z 650

S-K6R13-AFCRT

[Read More](#)

**SKU:**

**Price:** ₹145,000.00

**Categories:** [Exhausts](#)

### Product Description

Akrapovic Titanium Full System Exhaust

S-K6R13-AFCRT

Exhaust: Titanium with titanium end cap Manifold: Stainless steel Designed for track-day use, the Racing Line represents a full step in exhaust tuning. Power and torque are improved across the range for increased performance levels. It is made from lightweight titanium for the muffler outer sleeve with stainless-steel headers to provide a weight savings over the stock system and improve handling. It delivers a deeper and sportier sound for enhanced enjoyment. **The simple plug-and-play installation requires no remapping.**

---

## Brembo Brake Pad Front Kawasaki Ninja 650

07HO30SA

[Read More](#)

**SKU:**

**Price:** ₹3,900.00

**Categories:** [Brake Pad](#)

**Tags:** [Triumph](#)



## Product Description

Product Detail 07HO30SA This is a sintered compound, specific for front application, characterized by excellent efficiency in all conditions of use. It therefore represents an ideal alternative to original brake pads, both when cold and when hot. This compound is characterized by low wear which guarantees long life and suitable mileage. 2 brake pads are sold with this set. They will fit 1 caliper. 2 sets are needed for the front wheel

---

## Brembo Master Cylinder 19RCS Corsa Corta 110C74010 Kawasaki

110C74010

[Read More](#)

**SKU:**

**Price:** ₹41,000.00

**Categories:** [Master Cylinder](#)



## Product Description

### Brembo 110C74010

The 19RCS CORSA CORTA is characterized by the possibility it provides the rider to adapt the braking "bite point" to the desired riding feeling, in addition to the RCS (Ratio Click System), introduced 10 years ago on the Brembo 19RCS radial brake master cylinder, which allows the center distance of the master cylinder to be adjusted to "18" or "20". The master cylinder body is made of forge aluminum alloy, machined with 5-axis CAM technology. A hard oxide coating is used for the surface finish, which guarantees that the master cylinder main body is highly resistant to wear and its components move easily. The floating piston and the seals derive directly from those used in MotoGP, as do the housings for the bleeding and fueling systems, which are inclined by more than 30° to make bleeding the master cylinder easier.

---



## CNC Racing Evo Bar-end Mirror Pair Kawasaki Ninja 650 / Z 650

MR711B + MR712B

[Read More](#)

**SKU:**

**Price:** ₹23,000.00

**Categories:** [Mirrors](#)

### Product Description

CNC Racing Evo Bar-end Mirror Pair MR711B + MR712B Bar-end rear view mirrors made entirely from solid light alloy with subsequent surface anodization. Compatible with most of the handlebars, original and not, through expansion mounting system (handlebar internal diameter Ø 13.5 / 19 mm) or with M6 screw, supplied in the package; it can be mounted in high or low position. The CV001 U-bolt can be combined with the mirror on OEM Brembo pumps.

**UNIVERSAL PRODUCT: before purchasing, check the possibility of correct assembly at a specialized workshop**

---



## CNC Racing Rocket Bar-end Mirror Pair Kawasaki Ninja 650 / Z 650

MR701B + MR702B

[Read More](#)

**SKU:**

**Price:** ₹22,000.00

**Categories:** [Mirrors](#)

### Product Description

CNC Racing Rocket Bar-end Mirror Pair MR701B + MR702B Bar-end mirror, machined from light alloy billet and then given an anodized surface finish. The useful area extends on an 81mm diameter, to ensure the best possible visibility. The mirror can be fitted in either low or high position and is compatible with most handlebars, both original and non, with an expansion assembly system (handlebar internal diameter Ø 13.5/19 mm) or with a M6 screw, included in

the package. It is suggested to purchase our Brembo master cylinder clamp CV001.

**UNIVERSAL PRODUCT: before purchasing, check the possibility of correct assembly at a specialized workshop**

---



## GB Racing Clutch + Alternator Cover Set Kawasaki Ninja 650

EC-Z650-2017-SET-GBR

[Read More](#)

**SKU:**

**Price:** ₹34,000.00

**Categories:** [Clutch Cover](#)

### Product Description

GB Racing Clutch + Alternator Cover Set EC-Z650-2017-SET-GBR GB Racing products are the benchmark in high-performance, bolt-on motorcycle protection for the short circuit, road racing and street bike community and the only manufacturer of motorcycle protection to have received FIM product approval, a mark of quality carried since 2009. This has now been renewed for 2021 through to 2023 on our range of bolt-on secondary engine covers. Championships cover IDM, AMA, CIV, IDM, FFM EWC, BSB, WSBK, MotoGP and more.

---



## Lighttech Aluminum Wheel Valve Cap Black - All Kawasaki Models

VALNER

[Read More](#)

**SKU:**

**Price:** ₹400.00

**Categories:** [Accessories](#), [Valve Caps](#)

**Product Description**

VALNER Wheel valve cap aluminum - Black color Make your wheels look different with Lightech Aluminum metal valve caps. Universal fit and lasts longer than the plastic caps. Individually sold - buy a pair for front and rear wheels

---



**Lightech Aluminum Wheel Valve Cap Silver - All Kawasaki Models**

VALSIL  
[Read More](#)

**SKU:**  
**Price:** ₹400.00  
**Categories:** [Accessories](#), [Valve Caps](#)

**Product Description**

VALSIL Wheel valve cap aluminum - Silver color Make your wheels look different with Lightech Aluminum metal valve caps. Universal fit and lasts longer than the plastic caps. Individually sold - buy a pair for front and rear wheels

---

# Lightech Frame Slider Kawasaki Ninja 650



STEKA218

[Read More](#)

**SKU:**

**Price:** ₹10,200.00

**Categories:** [Frame Slider](#)

## Product Description

### Product Detail

**Shock absorbing frame slider kit comprising of nylon shells, antishock rubber with magnesium bushing and anodized aluminum ring. Provides resistance to impact and motorbike falls. Protects the engine and vital components from damage.**

---

# Lightech Integrated Turn Signal & Rear Stop Light Pair - All Kawasaki Models



FRE923NER

[Read More](#)

**SKU:**

**Price:** ₹6,600.00

**Categories:** [Turn Signals](#)

## Product Description

FRE923NER

---

# Lightech Rear Spool Black - All Kawasaki Models



CAVM8NER

[Read More](#)

**SKU:**

**Price:** ₹2,800.00

**Categories:** [Rear Spools](#)

## Product Description

Lightech Rear Spool CAVM8NER Pair of Lightech tripod supports with specific M8 attack. Thanks to these supports you can use the lift stands with fork attachments. Compatible with both front and rear stands.

---

# Lightech Sequential Turn Signal Pair - All Kawasaki Models



FRE925NER

[Read More](#)

**SKU:**

**Price:** ₹6,600.00

**Categories:** [Turn Signals](#)

## Product Description

FRE925NER



## Mivv GP Pro Black Steel Full System Exhaust Kawasaki Ninja 650 / Z 650

K.044.LXBP

[Read More](#)

**SKU:**

**Price:** ₹70,000.00

**Categories:** [Exhausts](#)

## Product Description

Mivv GP Pro Black Steel Full System Exhaust

K.044.LXBP

The Italian company Mivv manufactures exhausts for motorcycles since 1970 and what distinguishes it from other companies is their corporate responsibility: a very high level that lets them design and produce high-technology exhausts for motorcycle, designed and manufactured to meet the expectations of the riders themselves. The design of MIVV exhausts is a key



component, which is why it is developed with specialized designers of the motorcycle sector. In addition to design, Mivv uses high-quality sound-absorbing materials, thus allowing a considerable reduction of noise and heat.

---



## Mivv GP Pro Carbon Full System Exhaust Kawasaki Ninja 650 / Z 650

K.044.L2P

[Read More](#)

**SKU:**

**Price:** ₹75,000.00

**Categories:** [Exhausts](#)

### Product Description

Mivv GP Pro Carbon Full System Exhaust

K.044.L2P

The Italian company Mivv manufactures exhausts for motorcycles since 1970 and what distinguishes it from other companies is their corporate responsibility: a very high level that lets them design and produce high-technology exhausts for motorcycle, designed and manufactured to meet the expectations of the riders themselves. The design of MIVV exhausts is a key component, which is why it is developed with specialized designers of the motorcycle sector. In addition to design, Mivv uses high-quality sound-absorbing materials, thus allowing a considerable reduction of noise and heat.

---



## Mivv GP Pro Carbon Full System Exhaust Kawasaki Ninja 650 / Z 650

K.044.L6P

[Read More](#)

**SKU:**

**Price:** ₹75,000.00

**Categories:** [Exhausts](#)

## Product Description

Mivv GP Pro Titanium Full System Exhaust

K.044.L6P

The Italian company Mivv manufactures exhausts for motorcycles since 1970 and what distinguishes it from other companies is their corporate responsibility: a very high level that lets them design and produce high-technology exhausts for motorcycle, designed and manufactured to meet the expectations of the riders themselves. The design of MIVV exhausts is a key component, which is why it is developed with specialized designers of the motorcycle sector. In addition to design, Mivv uses high-quality sound-absorbing materials, thus allowing a considerable reduction of noise and heat.

---



## Mivv Oval Titanium With Carbon Cap Full System Exhaust Kawasaki Ninja 650 / Z 650

K.044.L4C

[Read More](#)

**SKU:**

**Price:** ₹75,000.00

**Categories:** [Exhausts](#)

## Product Description

Mivv Oval Titanium With Carbon Cap Full System Exhaust

K.044.L4C The Italian company Mivv manufactures exhausts for motorcycles since 1970 and what distinguishes it from other companies is their corporate responsibility: a very high level that lets them design and produce high-technology exhausts for motorcycle, designed and manufactured to meet the expectations of the riders themselves. The design of MIVV exhausts is a key component, which is why it is developed with specialized designers of the motorcycle sector. In addition to design, Mivv uses high-quality sound-absorbing materials, thus allowing a considerable reduction of noise and heat.

---



## Mivv Sport Delta Race Steel Carbon Full System Exhaust Kawasaki Ninja 650 / Z 650

K.044.LDRX

[Read More](#)

**SKU:**

**Price:** ₹75,000.00

**Categories:** [Exhausts](#)

### Product Description

Mivv Sport Delta Race Steel Carbon Full System Exhaust

K.044.LDRX The Italian company Mivv manufactures exhausts for motorcycles since 1970 and what distinguishes it from other companies is their corporate responsibility: a very high level that lets them design and produce high-technology exhausts for motorcycle, designed and manufactured to meet the expectations of the riders themselves. The design of MIVV exhausts is a key component, which is why it is developed with specialized designers of the motorcycle sector. In addition to design, Mivv uses high-quality sound-absorbing materials, thus allowing a considerable reduction of noise and heat.

---



## Over Racing Frame Slider Kawasaki Ninja 650

59-74-01

[Read More](#)

**SKU:**

**Price:** ₹15,500.00

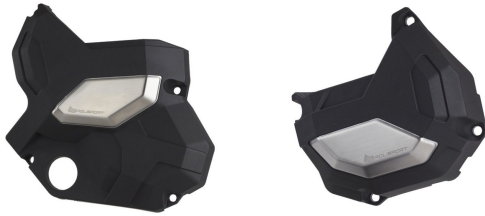
**Categories:** [Frame Slider](#)

### Product Description

Over Racing Frame Slider 59-74-01 Our first corporate partner and one of Suzuka's oldest Japanese parts maker, Over Racing has teamed up again to launch accessories and aftermarket parts for India. Hand built and machined frame sliders for the Kawasaki Ninja 650.

---

# Polisport Clutch & Alternator Cover Kawasaki Ninja 650 / Z 650 - Black



91107 - Black

[Read More](#)

**SKU:**

**Price:** ₹20,000.00

**Categories:** [Clutch Cover](#), [Protectors](#)

## Product Description

### Polisport Clutch & Alternator Cover

Polisport Engine Cover Protectors were designed to be the best protections in the market. Through research and development, we found the best materials to protect the engine from crashes and falls. We used a blend of highly resistant plastic with over-injected metallic parts to increase the protection level. We also took design seriously, with a minimalistic but high-tech approach, never forgetting function, which is the crux of our product.

91107 - Black Function Highly resistant protection of the engine cover against stone strikes and damage from falls or impacts when handling the bike Impact-absorbing rubber inserts positioned to cushion the contact between part and engine cover Perfect shape to perfectly fit your bike model. Small gap between standard cover and protection Rubber inserts allow a more even force distribution High-quality hardware Rubber inserts are resistant to high temperatures Technology Highly resistant plastic polymer to protect against falls and impacts Over-injected metal part strategically positioned to enhance protection in the event of a crash High-quality precision manufacture with over-injected impact-absorbing rubber inserts and over-injected stainless-steel insert Other Features Mounting kit included Fast and easy installation and removal Engraved metallic part with Polisport logo Texturized surface for a premium look Minimal design to blend into motorcycle look Developed and made in Europe Packaging Packed in recycled carton box Includes one Clutch and Alternator Cover Protector Includes all material needed for an easy installation

---



## Puig Dark Smoke Windscreen Kawasaki Ninja 650

3880F

[Read More](#)

**SKU:**

**Price:** ₹11,200.00

**Categories:** [Windscreen](#)

---

### Product Description

**PUIG WINDSHIELD Dark Smoked 3880F** Renew the image of your bike with the New Generation Sport windscreen from Puig. Manufactured in 3mm methacrylate, a material that guarantees high resistance to possible impacts and provides great aerodynamic capacity. The product has been tested in the wind tunnel, achieving the best results. Puig has taken into account the diversity of this style of motorcycle and has a model for each of the most current motorcycles. The assembly of the piece is an easy task and fits perfectly to the machine. To facilitate the assembly, Puig serves together with the fairing instructions for coupling.

---



## Puig Light Smoke Windscreen Kawasaki Ninja 650

3880H

[Read More](#)

**SKU:**

**Price:** ₹11,200.00

**Categories:** [Windscreen](#)

---

### Product Description

**PUIG WINDSHIELD Light Smoked 3880H** Renew the image of your bike with the New Generation Sport windscreen from Puig. Manufactured in 3mm methacrylate, a material that guarantees high resistance to possible impacts and provides great aerodynamic capacity. The product has been tested in the wind tunnel, achieving the best results. Puig has taken into



account the diversity of this style of motorcycle and has a model for each of the most current motorcycles. The assembly of the piece is an easy task and fits perfectly to the machine. To facilitate the assembly, Puig serves together with the fairing instructions for coupling.

---



## R&G Frame Slider Kawasaki Ninja 650 / Z 650

CP0416WH

[Read More](#)

**SKU:**

**Price:** ₹11,800.00

**Categories:** [Frame Slider](#)

### Product Description

R&G Frame Slider CP0416WH Color : Black R&G Aero Crash Protectors feature stylish, aerodynamic Aero Bobbins. Suitable for the Kawasaki Z650 and Ninja 650 models. R&G Crash Protectors offer core motorcycle protection, keeping the frame, engine and other critical components off the ground in the event of a crash, drop or slide.

---



## R&G Front Fender Extension Black Kawasaki Ninja 650 / Z 650

FERG0341BK

[Read More](#)

**SKU:**

**Price:** ₹5,000.00

**Categories:** [Accessories](#)

### Product Description

R&G Front Fender Extension FERG0341BK Color : Black R&G Fender Extenders offer additional protection to front-mounted coolers, downpipes and fairing panels from debris, road grit, mud and water kicked up by the front wheel. Attaching to the motorcycle's front mud guard / fender via included adhesive strips and push rivets, installation takes only minutes. Designed to mate

exactly to the front mud guard / fender, thanks to the latest 3D scanning technologies. Each design is bespoke to its intended fender and offers tailored protection for best performance and aesthetics. Made from ABS plastic and available in Black or Carbon Fiber effect finish. **Made in the UK.**

---



## R&G Front Fork Slider Kawasaki Ninja 650 / Z 650

FP0192BK

[Read More](#)

**SKU:**

**Price:** ₹6,300.00

**Categories:** [Protectors](#)

### Product Description

R&G Front Fork Slider FP0192BK Color : Black These fork protectors are suitable for the Kawasaki Z650 and Ninja 650 models. Easy to install, they simply install onto either side of the spindle connected by a tie bar helping eliminate damage to the front forks, fork bottoms, disc, fork bottoms and brake calipers from a crash or drop or slide.

---



## R&G Radiator Guard Black Kawasaki Ninja 650 / Z 650

RAD0210BK

[Read More](#)

**SKU:**

**Price:** ₹9,000.00

**Categories:** [Radiator Guards](#)

## Product Description

R&G Radiator Guard RAD0210BK Color : Black Available in Black or Titanium (color) powder coat finishes to fit the Kawasaki Z650 and Ninja 650 models. Made from pressed aluminum. They improve the looks of your bike as well as help protect your expensive and vulnerable radiator from flying road debris. Installing behind the OE plastic guard, the R&G mesh prevents smaller road debris and stones from hitting the radiator that can easily pass past the OE guard. **No permanent modifications need to be made to the bike.**

---



## R&G Radiator Guard Stainless Steel Kawasaki Ninja 650 / Z 650

SRG0050SS

[Read More](#)

**SKU:**

**Price:** ₹12,500.00

**Categories:** [Radiator Guards](#)

## Product Description

R&G Radiator Guard SRG0050SS Stainless Steel The R&G Stainless Steel Radiator Guard series is a more rugged version of our existing aluminum radiator guard. Constructed from 1mm stainless steel sheet allows the guard to be incredibly strong and impervious to rust – perfect for bikes and riders who may tackle demanding terrains and conditions. The laser-cut grills are designed for maximum airflow to the radiator so that cooling isn't compromised; the Radiator Guard is as good looking as it is purposeful. The CNC finished guard attaches easily and quickly to the front of the radiator, either by utilizing the existing mounting bolts or cable tied on. **No permanent modifications need to be made to the bike.**

---





## SC-Project GP Tech Carbon Fiber Muffler Kawasaki Ninja 650

D04B-28C

[Read More](#)

**SKU:**

**Price:** ₹75,000.00

**Categories:** [Exhausts](#)

### Product Description

**For the first time ever in India!!**

**SC Project has created for Lanesplit a custom Carbon Fiber Muffler for the 300 - 1300cc bike segment, only for the India market. This product is not available anywhere else.** The slip-on exhaust fits a wide variety of bikes (details in additional information). May need an additional link pipe, depending on bike model. Please contact us for any query. This product is limited to only 1 piece per customer. This is not a dual exhaust. Only 1 muffler included.

***\* Picture is for representation and illustration only.***

The GP-TECH muffler characterized by its round and simple shape gives a sporty and attractive line to your motorbike. The GP-TECH is distinguished by the sporty exhaust end cap carbon fiber Twill. The visible welding with T.I.G. technology and the insert bushings made in CNC allow the silencer to be an added value. The muffler is equipped the DB-Killer and is approved for road use. In the kit are included the steel clamps with anti-vibration rubber for to install the silencers.

### **Specially produced for Lanesplit**

Matte Carbon Fiber Sleeve Matte Carbon Fiber Cap Sleeve Dia 98mm Sleeve Length 280mm  
Inlet diameter 52mm Internal Dia 52mm Support Bracket Removable dB-Killer

---



## Vulturbike + Lanesplit Wheel Decal Kawasaki Ninja 650

Each set has 8 decals. 2 decals per side (total of 4 decals for 1 wheel) For the Ninja 650 Front wheel - 17 inch Rear wheel - 17 inch

[Read More](#)

**SKU:**

**Price:** ₹800.00

**Categories:** [Wheel Rim Decals](#)

### Product Description

## For the first time in India!!

Vulturbike, the renowned Italian decal company has **appointed Lanesplit as the official dealer for India**. The two companies have collaborated and launched a special set of wheel decals only for the India market. Presenting the Vulturbike + Lanesplit set of decals for all India spec BMW, Kawasaki and KTM bikes with 17 and 19 inch wheels. This wheel decal has been specially designed by Vulturbike, after market survey and collaboration with Lanesplit. The wheel decals are printed on high grade Avery Dennison film, and the same material is used by manufacturers like Aprilia, BMW and Ducati for their company decals. The decals are printed and laminated and can be attached to any 17 or 19 inch rim and will last for long use. The decal design comprises of a checker flag, the company corresponding color and the Italian tricolore. This is a unique design created specifically for India by Vulturbike. It is only available at the Lanesplit retail and online store. Grab yours today and make your bike stand out from the rest of the crowd. Please see images for illustration and design concept A full wheel set consists of 8 decals + 2 free stickers of Lanesplit and Vulturbike

---