



Brembo Master Cylinder 19RCS Corsa Corta 110C74010 Kawasaki

110C74010

[Read More](#)

SKU:

Price: ₹41,000.00

Categories: [Master Cylinder](#)

Product Description

Brembo 110C74010

The 19RCS CORSA CORTA is characterized by the possibility it provides the rider to adapt the braking "bite point" to the desired riding feeling, in addition to the RCS (Ratio Click System), introduced 10 years ago on the Brembo 19RCS radial brake master cylinder, which allows the center distance of the master cylinder to be adjusted to "18" or "20". The master cylinder body is made of forge aluminum alloy, machined with 5-axis CAM technology. A hard oxide coating is used for the surface finish, which guarantees that the master cylinder main body is highly resistant to wear and its components move easily. The floating piston and the seals derive directly from those used in MotoGP, as do the housings for the bleeding and fueling systems, which are inclined by more than 30° to make bleeding the master cylinder easier.

CNC Racing Blaze Black Handle Bar Ends Kawasaki all models



CM239B

[Read More](#)

SKU:

Price: ₹5,000.00

Categories: [Bar Ends](#)

Product Description

CNC Racing Blaze Handle Bar Ends

CM239B Color: Black Handlebar counterweights made from solid light alloy using CNC machines and subsequent surface anodization. The kit consists of two counterweights that give an eye-catching and racing aesthetic, eliminating the original plastic or iron ones. The kit comes with the necessary screws for mounting on all types of handlebars. On motorcycles equipped with standard handguards it will be necessary to remove them. The kit consists of 2 pieces.



CNC Racing Blaze Gold Handle Bar Ends Kawasaki all models

CM239G

[Read More](#)

SKU:

Price: ₹5,000.00

Categories: [Bar Ends](#)

Product Description

CNC Racing Blaze Handle Bar Ends

CM239G Color: Gold Handlebar counterweights made from solid light alloy using CNC machines and subsequent surface anodization. The kit consists of two counterweights that give an eye-catching and racing aesthetic, eliminating the original plastic or iron ones. The kit comes with the necessary screws for mounting on all types of handlebars. On motorcycles equipped with standard handguards it will be necessary to remove them. The kit consists of 2 pieces.



CNC Racing Blaze Red Handle Bar Ends Kawasaki all models

CM239R

[Read More](#)

SKU:

Price: ₹5,000.00

Categories: [Bar Ends](#)

Product Description

CNC Racing Blaze Handle Bar Ends

CM239R Color: Red Handlebar counterweights made from solid light alloy using CNC machines and subsequent surface anodization. The kit consists of two counterweights that give an eye-catching and racing aesthetic, eliminating the original plastic or iron ones. The kit comes with the necessary screws for mounting on all types of handlebars. On motorcycles equipped with standard handguards it will be necessary to remove them. The kit consists of 2 pieces.

CNC Racing Stainless Steel Silver Black Handle Bar Ends Kawasaki all models



CM431SB

[Read More](#)

SKU:

Price: ₹12,500.00

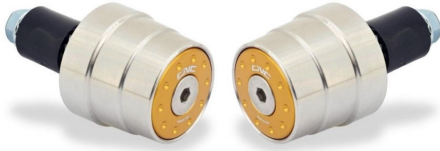
Categories: [Bar Ends](#)

Product Description

CNC Racing Stainless Steel Dual Color Handle Bar Ends

CM431SB Color: Silver / Black Handlebar counterweights made from solid stainless steel using CNC machines. The external caps made of aluminum with subsequent colored anodization give an attractive aesthetic. The kit comes with rubber expanders of various sizes for mounting on all types of handlebars. On motorcycles equipped with standard handguards it will be necessary to remove them. The kit consists of 2 pieces, weighing 205 g each

CNC Racing Stainless Steel Silver Gold Handle Bar Ends Kawasaki all models



CM431SG

[Read More](#)

SKU:

Price: ₹12,500.00

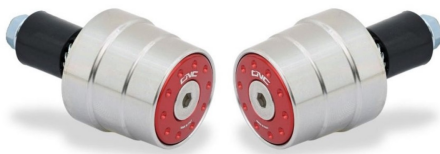
Categories: [Bar Ends](#)

Product Description

CNC Racing Stainless Steel Dual Color Handle Bar Ends

CM431SG Color: Silver / Gold Handlebar counterweights made from solid stainless steel using CNC machines. The external caps made of aluminum with subsequent colored anodization give an attractive aesthetic. The kit comes with rubber expanders of various sizes for mounting on all types of handlebars. On motorcycles equipped with standard handguards it will be necessary to remove them. The kit consists of 2 pieces, weighing 205 g each

CNC Racing Stainless Steel Silver Red Handle Bar Ends Kawasaki all models



CM431SR

[Read More](#)

SKU:

Price: ₹12,500.00

Categories: [Bar Ends](#)

Product Description

CNC Racing Stainless Steel Dual Color Handle Bar Ends

CM431SR Color: Silver / Red Handlebar counterweights made from solid stainless steel using CNC machines. The external caps made of aluminum with subsequent colored anodization give

an attractive aesthetic. The kit comes with rubber expanders of various sizes for mounting on all types of handlebars. On motorcycles equipped with standard handguards it will be necessary to remove them. The kit consists of 2 pieces, weighing 205 g each



Galespeed Brake Master Cylinder 17VRC Series Kawasaki (all models)

VRC17A-17B

[Read More](#)

SKU:

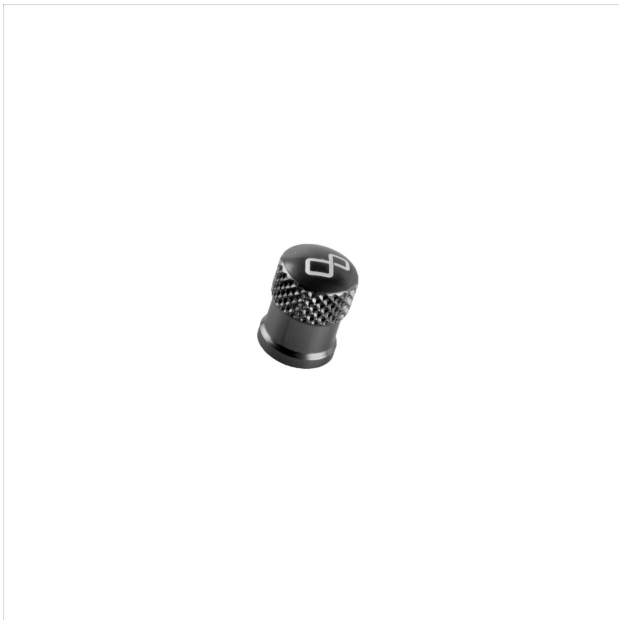
Price: ₹31,000.00

Categories: [Master Cylinder](#)

Product Description

Galespeed Brake Master Cylinder

VRC17A-17B Launching for the first time in India, the Galespeed line of Brake and Clutch cylinders from Activ, Japan's biggest manufacturer of brake calipers and cylinders. The VRC - Variable Ratio Control series of master cylinders give you wider lever ratio adjust range (0.25mm per click, 8 clicks/max. 2mm adjust range), and helps you to find the most suitable brake feeling without being affected by different brake calipers. Fully developed and manufactured in Japan, available solely now with Lanesplit.



Lichtech Aluminum Wheel Valve Cap Black - All Kawasaki Models

VALNER

[Read More](#)

SKU:

Price: ₹400.00

Categories: [Accessories](#), [Valve Caps](#)

Product Description

VALNER Wheel valve cap aluminum - Black color Make your wheels look different with Lightech Aluminum metal valve caps. Universal fit and lasts longer than the plastic caps. Individually sold - buy a pair for front and rear wheels



Lightech Aluminum Wheel Valve Cap Silver - All Kawasaki Models

VALSIL

[Read More](#)

SKU:

Price: ₹400.00

Categories: [Accessories](#), [Valve Caps](#)

Product Description

VALSIL Wheel valve cap aluminum - Silver color Make your wheels look different with Lightech Aluminum metal valve caps. Universal fit and lasts longer than the plastic caps. Individually sold - buy a pair for front and rear wheels



Lightech Integrated Turn Signal & Rear Stop Light Pair - All Kawasaki Models

FRE923NER

[Read More](#)

SKU:

Price: ₹6,600.00

Categories: [Turn Signals](#)

Product Description

FRE923NER



Lightech Rear Spool Black - All Kawasaki Models

CAVM8NER

[Read More](#)

SKU:

Price: ₹2,800.00

Categories: [Rear Spools](#)

Product Description

Lightech Rear Spool CAVM8NER Pair of Lightech tripod supports with specific M8 attack. Thanks to these supports you can use the lift stands with fork attachments. Compatible with both front and rear stands.

Lightech Sequential Turn Signal Pair - All Kawasaki Models

FRE925NER

[Read More](#)

SKU:

Price: ₹6,600.00

Categories: [Turn Signals](#)



Product Description

FRE925NER



Mivv Oval Black Stainless Steel Full System Exhaust Kawasaki Versys 650

K.055.LZC

[Read More](#)

SKU:

Price: ₹75,000.00

Categories: [Exhausts](#)

Product Description

Mivv Oval Black Stainless Steel Full System Exhaust

K.055.LZC Made to improve the bike's aesthetics, sound and performance, the Mivv slip-on exhaust comes from the utmost attention to design, with the aim of satisfying those who want to stand out, even through the look of their bike. The exhausts of the Oval line adapt perfectly to any type of motorcycle. The Oval muffler, finished with great attention to detail, represents the best compromise between design and performance. Characterized by a body and cup in high thermal resistance carbon, the exhaust has open slots on the cup, a detail that gives the silencer a sportier design.

Puig Dark Smoke Windscreen Kawasaki Versys 650



9421F

[Read More](#)

SKU:

Price: ₹11,500.00

Categories: [Windscreen](#)

Product Description

PUIG WINDSHIELD Dark Smoked 9421F Renew the image of your bike with the New Generation Sport windscreen from Puig. Manufactured in 3mm methacrylate, a material that guarantees high resistance to possible impacts and provides great aerodynamic capacity. The product has been tested in the wind tunnel, achieving the best results. Puig has taken into account the diversity of this style of motorcycle and has a model for each of the most current motorcycles. The assembly of the piece is an easy task and fits perfectly to the machine. To facilitate the assembly, Puig serves together with the fairing instructions for coupling.

Puig Light Smoke Windscreen Kawasaki Versys 650



9421H

[Read More](#)

SKU:

Price: ₹11,500.00

Categories: [Windscreen](#)

Product Description

PUIG WINDSHIELD Light Smoked 9421H Renew the image of your bike with the New Generation Sport windscreen from Puig. Manufactured in 3mm methacrylate, a material that guarantees high resistance to possible impacts and provides great aerodynamic capacity. The product has been tested in the wind tunnel, achieving the best results. Puig has taken into account the diversity of this style of motorcycle and has a model for each of the most current motorcycles. The assembly of the piece is an easy task and fits perfectly to the machine. To facilitate the assembly, Puig serves together with the fairing instructions for coupling.



SC-Project GP Tech Carbon Fiber Muffler Kawasaki Versys 650

D04B-28C

[Read More](#)

SKU:

Price: ₹75,000.00

Categories: [Exhausts](#)

Product Description

For the first time ever in India!!

SC Project has created for Lanesplit a custom Carbon Fiber Muffler for the 300 - 1300cc bike segment, only for the India market. This product is not available anywhere else. The slip-on exhaust fits a wide variety of bikes (details in additional information). May need an additional link pipe, depending on bike model. Please contact us for any query. This product is limited to only 1 piece per customer. This is not a dual exhaust. Only 1 muffler included.

*** Picture is for representation and illustration only.**

The GP-TECH muffler characterized by its round and simple shape gives a sporty and attractive line to your motorbike. The GP-TECH is distinguished by the sporty exhaust end cap carbon fiber Twill. The visible welding with T.I.G. technology and the insert bushings made in CNC allow the silencer to be an added value. The muffler is equipped the DB-Killer and is approved for road use. In the kit are included the steel clamps with anti-vibration rubber for to install the silencers.

Specially produced for Lanesplit

Matte Carbon Fiber Sleeve Matte Carbon Fiber Cap Sleeve Dia 98mm Sleeve Length 280mm Inlet diameter 52mm Internal Dia 52mm Support Bracket Removable dB-Killer

Sprint Air Filter Kawasaki Versys 650



[Read More](#)

SKU:

Price: ₹10,500.00

Categories: [Air Filters](#)

Tags: [Kawasaki](#)

Product Description

Sprint Filter P08 is a standard performance air filter, ideal for street legal use or track day. Sprint Filter P08 uses a special polyester filtering media with a wire diameter of only 70 microns. Its unique weave pattern can filter debris as small as 80 microns while having the highest permeability for any other air filter brand on the market. The increased airflow of the P08 air filter will help maximize your motorcycle power potential while offering excellent filtration protection. Minimal maintenance Remove the filter from the airbox, blow it clean with compressed air, and reinsert it. No washing, cleaning or oil treatment needed. Product lifecycle The P08's polyester material will display no deterioration or loss of structure or performance if looked after with care.
