



Akrapovic Carbon Fiber Exhaust Full System Kawasaki ZX 10R

S-K10E10-RC

[Read More](#)

SKU:

Price: ₹400,000.00

Categories: [Exhausts](#)

Product Description

Akrapovic Carbon Fiber Exhaust Full System S-K10E10-RC This is a complete system constructed from high-grade, race-proven lightweight titanium alloys. It provides an impressive increase in power across the entire rev range while also improving torque delivery. The weight is decreased by over 6 kg. The system is finished with a hand-crafted carbon-fiber hexagonal muffler - inspired by Jonathan Rea's (Kawasaki Racing Team) World Superbike-winning machine. The power level has been increased with an extra 8.2 kW (11 HP), recorded on Akrapovič's in-house dyno with back-to-back tests of the Kawasaki with an Evolution Line (Titanium) exhaust and a Ninja ZX-10RR with a standard stock exhaust system. The exhaust delivers a unique, deep, sporty sound that enhances the system's sporty heritage. An optional aluminum muffler bracket is available to further complement the entire system. The bike's ECU must be remapped when the Evolution Line system is installed.



Akrapovic Carbon Fiber Exhaust Full System Stainless Steel Kawasaki ZX 10R

S-K10R10-RC

[Read More](#)

SKU:

Price: ₹300,000.00

Categories: [Exhausts](#)

Product Description

Akrapovic Carbon Fiber Exhaust Full System S-K10R10-RC This is a complete stainless-steel exhaust system with a beautifully finished carbon-fibre muffler outer sleeve and high-grade titanium endcap. With the Racing Line, power and torque levels have been increased by an extra 8.2 Kw (11.1 HP) and 13.4 Nm, recorded on Akrapovič's in-house dyno with back-to-back tests of the Kawasaki with a Racing Line (Titanium) exhaust and a Ninja ZX-10RR with a standard stock exhaust system. Coupled with linear delivery right across the entire rev range, it comes with a hexagonal muffler - including titanium inner parts to reduce weight - and a deep sporty sound. An option to add an aluminum muffler bracket is also available to complement the beautiful finish of this system. The bike's ECU must be remapped when the Racing Line system is installed.



Arrow Competition SBK Evo Titanium Full System Exhaust Kawasaki ZX 10R

71216PTZ

[Read More](#)

SKU:

Price: ₹380,000.00

Categories: [Exhausts](#)

Product Description

Arrow Competition SBK Evo Titanium Exhaust

71216PTZ Terminal material: titanium Internal Structure Material: stainless steel Back material: carbon Collector material: titanium Fitting material: titanium Designed specifically for lovers of the track and competitions, the SBK full titanium competition complete exhaust kit was created specifically for tuned bikes suitable for participation in circuit competitions thanks to their production in replication to the exhausts that are supplied to the top SBK teams and SS. The competition Arrow racing complete exhaust kit will allow the rider to obtain the maximum performance that a complete system can provide without modifying the classic aesthetics of the Race Tech Arrow muffler. The silencer is equipped with Db Killer completely in titanium like the manifolds and the fitting, for maximum power and a high weight reduction.

NOTE: Inside the package there are the racing collectors, terminal, fitting and all the small parts necessary for assembly.



Arrow Indy Race Carbon Exhaust Slip On Kawasaki ZX 10R

71928MK

[Read More](#)

SKU:

Price: ₹89,000.00

Categories: [Exhausts](#)

Product Description

Arrow Indy Race Carbon Exhaust Slip on
71928MK



Arrow Indy Race Titanium Exhaust Slip On Kawasaki ZX 10R

71928PK

[Read More](#)

SKU:

Price: ₹87,000.00

Categories: [Exhausts](#)

Product Description

Arrow Indy Race Titanium Exhaust Slip on
71928PK



Arrow Pro Race Titanium Exhaust Slip On Kawasaki ZX 10R

71928PR

[Read More](#)

SKU:

Price: ₹83,000.00

Categories: [Exhausts](#)

Product Description

Arrow Pro Race Titanium Exhaust Slip on
71928PR



Arrow Titanium Pro Race Exhaust Half System Kawasaki ZX 10R

71215HCP

[Read More](#)

SKU:

Price: ₹96,000.00

Categories: [Exhausts](#)

Product Description

Arrow Titanium Pro Race Exhaust

71215HCP

Technical Features :

External Silencer Material : Titanium

Internal Silencer Material : Titanium

Silencer End Cap Material : Titanium

Link Pipe Material : Titanium

This intermediate kit includes: Pro-race titanium silencer + Titanium link pipe ø54-65mm.



Arrow Titanium Pro Race with Titanium End Cap Exhaust Half System Kawasaki ZX 10R

71215HCPF

[Read More](#)

SKU:

Price: ₹104,000.00

Categories: [Exhausts](#)

Product Description

Arrow Titanium Pro Race Exhaust

71215HCPF

Technical Features :

External Silencer Material : Titanium

Internal Silencer Material : Titanium

Silencer End Cap Material : Titanium

Link Pipe Material : Titanium

This intermediate kit includes: Pro-race titanium silencer + Titanium link pipe ø54-65mm.



Bonamici Adjustable Rearsets Kawasaki ZX 10R

K021

[Read More](#)

SKU:

Price: ₹80,000.00

Categories: [Rearsets](#)

Product Description

Bonamici Adjustable Rearsets K021 The rearsets are made entirely from solid material using numerical control machines (CNC) with 3D technology. The use of return springs integrates in the balls and bearings a sphere in place of the bronze bushes, completing the work by manufacturing an excellent product that also offers the most demanding pilots. These platforms can operate with normal and inverted (GP Shifter) gearboxes. Technical features:

- Possibility of adjustment in various positions
- Integrated brake lever return spring
- Off-center for millimeter adjustment of the brake lever position
- Adjustment of the pin point lever to change the millimeter
- Black anodizing
- Rubber toe cap
- Non-slip footrest



Bonamici Racing Fuel Tank Cap Kawasaki ZX 10R

FC170

[Read More](#)

SKU:

Price: ₹14,000.00

Categories: [Fuel Tank Cap](#)



Product Description

Bonamici Racing Fuel Tank Cap

FC170 Color: Black Material: Aluminum Bonamici Racing tank cap completely in billet aluminum with subsequent surface anodization. The quick-closing cap will allow faster refueling without using the ignition key. Simple to install and requires no modification for correct assembly.

NOTE: The tank cap and all the small parts necessary for correct assembly are included in the package.

Brembo Master Cylinder 19RCS Corsa Corta 110C74010 Kawasaki



110C74010

[Read More](#)

SKU:

Price: ₹41,000.00

Categories: [Master Cylinder](#)

Product Description

Brembo 110C74010

The 19RCS CORSA CORTA is characterized by the possibility it provides the rider to adapt the braking "bite point" to the desired riding feeling, in addition to the RCS (Ratio Click System), introduced 10 years ago on the Brembo 19RCS radial brake master cylinder, which allows the center distance of the master cylinder to be adjusted to "18" or "20". The master cylinder body is made of forge aluminum alloy, machined with 5-axis CAM technology. A hard oxide coating is used for the surface finish, which guarantees that the master cylinder main body is highly resistant to wear and its components move easily. The floating piston and the seals derive directly from those used in MotoGP, as do the housings for the bleeding and fueling systems, which are inclined by more than 30° to make bleeding the master cylinder easier.

GB Racing Clutch Cover Kawasaki ZX 10R

EC-ZX10-2011-2-GBR

[Read More](#)

SKU:

Price: ₹13,000.00

Categories: [Clutch Cover](#)



Product Description

EC-ZX10-2011-2-GBR Material: 60% long glass fibered Nylon GB Racing is a specialist in motorcycle protection, producing frame, engine and fairing protections for the motorcycles of the most prestigious brands. The innovative GB Racing protections are made using a hot forging technique in sturdy 6.6 nylon, making them much more resistant to abrasion, heat developed by the engine and impact. Structurally, the Nylon fiber absorbs the kinetic energy of impact better, while the hot injection of the components during the construction phase allows effective elasticity. In addition to the undoubted improvement of the aesthetics of the bike, the protection of the engine and the frame remain the main purpose of the GB Racing components, protecting all the most delicate parts from accidental collisions or sliding with the asphalt, as well as from bad weather, dust and debris from the road surface. In fact, the GB Racing crankcases are easily installed in a few minutes and perfectly match the shape of the bike.

Gilles Adjustable Rearsets Kawasaki ZX 10R

FXR-K07-B

[Read More](#)

SKU:

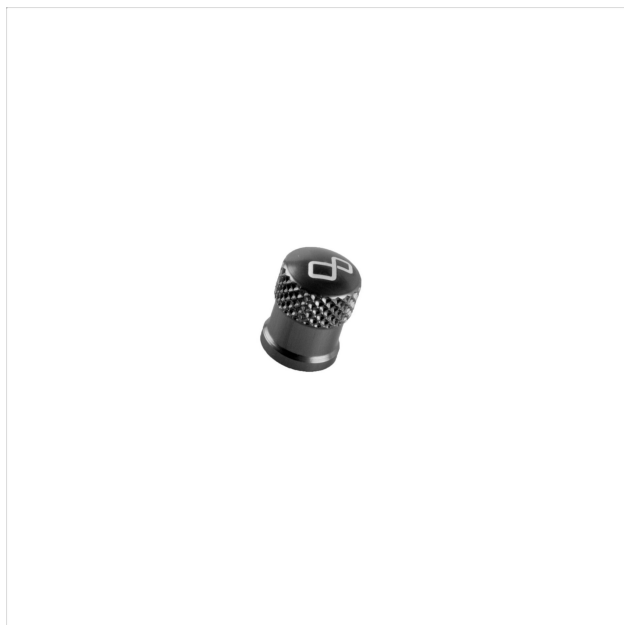
Price: ₹75,000.00

Categories: [Rearsets](#)



Product Description

Gilles Adjustable Rearsets FXR-K07-B Color: Black Gearbox type: Standard / Reverse.
Material: Aluminum A completely new generation of rear set systems. The MUE2 combines futuristic design with the highest quality workmanship and significantly easier foot plate position adjustment. Black anodized with contrasting color adjusters, which combine sportiness and aggressiveness in a single product. The positions of the footrests and the brake and gear levers can be freely adjusted according to your personalization criteria in three different positions. The footrests are positioned using a combination of sliding and rotating adjustments in a single point, making them extremely simple to modify. The footrests also provide the possibility to leave the standard gearbox or to reverse it to satisfy every type of need. The heel guards are fully carbon on both sides that define the design of the Gilles Tooling rear sets. Attention: For correct installation of the footrests, we recommend contacting a specialized workshop or an experienced and qualified mechanic. **NOTE: Inside the package there are two footrests, an instruction manual and all the small parts necessary for correct assembly.**



Lightech Aluminum Wheel Valve Cap Black - All Kawasaki Models

VALNER

[Read More](#)

SKU:

Price: ₹400.00

Categories: [Accessories](#), [Valve Caps](#)

Product Description

VALNER Wheel valve cap aluminum - Black color Make your wheels look different with Lightech Aluminum metal valve caps. Universal fit and lasts longer than the plastic caps. Individually sold - buy a pair for front and rear wheels

Lightech Aluminum Wheel Valve Cap Silver - All Kawasaki Models



VALSIL

[Read More](#)

SKU:

Price: ₹400.00

Categories: [Accessories](#), [Valve Caps](#)

Product Description

VALSIL Wheel valve cap aluminum - Silver color Make your wheels look different with Lightech Aluminum metal valve caps. Universal fit and lasts longer than the plastic caps. Individually sold - buy a pair for front and rear wheels

Lightech Brake / Clutch Master Cylinder Cover Kawasaki ZX 10R - Black



FBC04NER

[Read More](#)

SKU:

Price: ₹3,000.00

Categories: [Brake / Clutch Reservoir Cover](#)

Product Description

FBC04NER



Lighttech Brake / Clutch Master Cylinder Cover Kawasaki ZX 10R - Cobalt

FBC04COB

[Read More](#)

SKU:

Price: ₹3,000.00

Categories: [Brake / Clutch Reservoir Cover](#)

Product Description

FBC04COB



Lighttech Brake / Clutch Master Cylinder Cover Kawasaki ZX 10R - Gold

FBC04ORO

[Read More](#)

SKU:

Price: ₹3,000.00

Categories: [Brake / Clutch Reservoir Cover](#)

Product Description

FBC04ORO



Lighttech Brake / Clutch Master Cylinder Cover Kawasaki ZX 10R - Green

FBC04VER

[Read More](#)

SKU:

Price: ₹3,000.00

Categories: [Brake / Clutch Reservoir Cover](#)

Product Description

FBC04VER



Lighttech Brake / Clutch Master Cylinder Cover Kawasaki ZX 10R - Red

FBC04ROS

[Read More](#)

SKU:

Price: ₹3,000.00

Categories: [Brake / Clutch Reservoir Cover](#)

Product Description

FBC04ROS

Lightech Brake / Clutch Master Cylinder Cover Kawasaki ZX 10R - Silver



FBC04SIL

[Read More](#)

SKU:

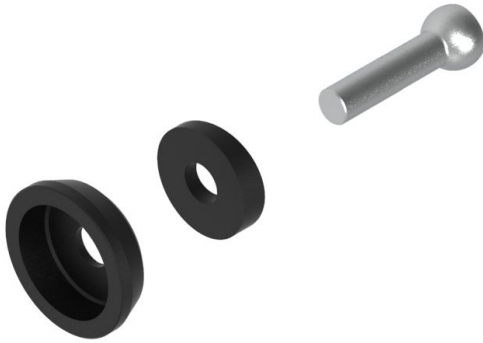
Price: ₹3,000.00

Categories: [Brake / Clutch Reservoir Cover](#)

Product Description

FBC04SIL

Lightech Brake Lever Adaptor Kawasaki ZX 10R



KPL304

[Read More](#)

SKU:

Price: ₹2,700.00

Categories: [Protectors](#)

Product Description

KPL304 Adaptor for brake lever guard. Bought separately with the lever guard. Required for installation



Lighttech Brake Lever Protector with Gold Guard End Kawasaki ZX 10R

ISS113RAORO

[Read More](#)

SKU:

Price: ₹16,700.00

Categories: [Protectors](#)

Product Description

ISS113RAORO Aluminum Brake Lever Guard - Axle Base 132 mm / Anodized Guard end / Gold



Lighttech Brake Lever Protector with Green Guard End Kawasaki ZX 10R

ISS113RAVER

[Read More](#)

SKU:

Price: ₹12,700.00

Categories: [Protectors](#)

Product Description

ISS113RAVER Aluminum Brake Lever Guard - Axle Base 132 mm / Anodized Guard end / Green



Lighttech Brake Lever Protector with Red Guard End Kawasaki ZX 10R

ISS113RAROS

[Read More](#)

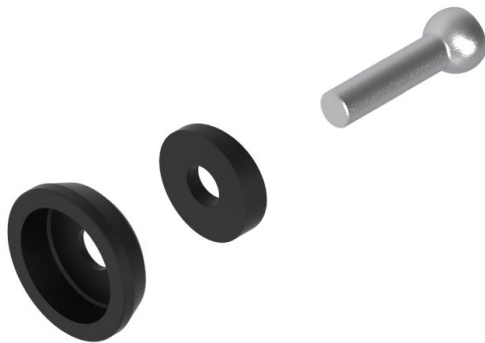
SKU:

Price: ₹16,700.00

Categories: [Protectors](#)

Product Description

ISS113RAROS Aluminum Brake Lever Guard - Axle Base 132 mm / Anodized Guard end / Red



Lighttech Clutch Lever Adaptor Kawasaki ZX 10R

KPL304

[Read More](#)

SKU:

Price: ₹2,700.00

Categories: [Protectors](#)

Product Description

KPL304 Adaptor for clutch lever guard. Bought separately with the lever guard. Required for installation

Lightech Frame Slider Kawasaki ZX 10R



STEKA210

[Read More](#)

SKU:

Price: ₹12,000.00

Categories: [Frame Slider](#)

Tags: [Kawasaki](#)

Product Description

Product Detail

Shock absorbing frame slider kit comprising of nylon shells, antishock rubber with magnesium bushing and anodized aluminum ring. Provides resistance to impact and motorbike falls. Protects the engine and vital components from damage.

Lightech Integrated Turn Signal & Rear Stop Light Pair - All Kawasaki Models



FRE923NER

[Read More](#)

SKU:

Price: ₹6,600.00

Categories: [Turn Signals](#)

Product Description

FRE923NER

Lightech Rear Spool Black - All Kawasaki Models



CAVM8NER

[Read More](#)

SKU:

Price: ₹2,800.00

Categories: [Rear Spools](#)

Product Description

Lightech Rear Spool CAVM8NER Pair of Lightech tripod supports with specific M8 attack. Thanks to these supports you can use the lift stands with fork attachments. Compatible with both front and rear stands.

Lightech Sequential Turn Signal Pair - All Kawasaki Models



FRE925NER

[Read More](#)

SKU:

Price: ₹6,600.00

Categories: [Turn Signals](#)

Product Description

FRE925NER

Mivv Double Gun Titanium Exhaust Slip On Kawasaki ZX 10R



K.042.SDG

[Read More](#)

SKU:

Price: ₹44,000.00

Categories: [Exhausts](#)

Product Description

Mivv Double Gun Titanium Exhaust Slip on

K.042.SDG



Mivv GP Delta Race Carbon Exhaust Slip On Kawasaki ZX 10R

K.042.LDRC

[Read More](#)

SKU:

Price: ₹75,500.00

Categories: [Exhausts](#)

Product Description

Mivv Delta Race Carbon Exhaust Slip on
K.042.LDRC



Mivv GP Pro Black Stainless Steel Exhaust Slip On Kawasaki ZX 10R

K.042.LXBP

[Read More](#)

SKU:

Price: ₹47,000.00

Categories: [Exhausts](#)

Product Description

Mivv GP Pro Black Stainless Steel Exhaust Slip on
K.042.LXBP



Mivv GP Pro Titanium Exhaust Slip On Kawasaki ZX 10R

K.042.L6P

[Read More](#)

SKU:

Price: ₹54,000.00

Categories: [Exhausts](#)

Product Description

Mivv GP Pro Titanium Exhaust Slip on
K.042.L6P

Rizoma Fuel Tank Cap Kawasaki ZX 10R

TF011B

[Read More](#)

SKU:

Price: ₹23,500.00

Categories: [Fuel Tank Cap](#)



Product Description

Rizoma Fuel Tank Cap TF011B The Rizoma fuel tank cap is made entirely from billet aluminum and combines design, technology, high quality materials and safety. The Key Lock System reduces the risk of tampering while maintaining ease of installation and use. The two-tone finish is obtained through anodization, which keeps it looking good for longer.



Rizoma Stealth Rear View Mirror Pair Black Kawasaki ZX 10R

BSS060B

[Read More](#)

SKU:

Price: ₹49,000.00

Categories: [Mirrors](#)

Product Description

Rizoma Stealth Rear View Mirror BSS060B Out of the interface between racing experience and aeronautical inspiration comes a new mirror: Stealth, an accessory specifically designed for supersport bikes. It consists of a fixed part, which allows the fitting directly to the fairing, and a movable part, which acts as a mirror glass holder. Thanks to a rotating system, by a simple movement, the two parts get aligned: in closed position the mirror becomes an aerodynamic foil. While the mirror glass holder is always the same, the fixed component is designed ad hoc for each supersport bikes for which Stealth was developed, looking for the best solution to match the relative aerodynamic results. Made of billet aluminum, it has a convex glass surface to provide a wider viewing angle and is available in three different anodized colors. Stealth's design, with its wing-like shape and 25° angle relative to the ground, give it a linear look, ensure it generates downforce, in turn improving the bike's grip and handling performance, especially at high speed. Downforce pressure is around 4 kg at 300 km/h. The ergonomics has been optimized as well: when the rider takes a sporty riding position, the mirrors are aligned with the rider's eye level. In this way, the rider does not have to raise his position to get a correct rear view, keeping the head protected by the headlight fairing and, therefore, by the pressure that impacts the face at high speed.

Rizoma Stealth Rear View Mirror Pair Silver Kawasaki ZX 10R



BSS060A

[Read More](#)

SKU:

Price: ₹49,000.00

Categories: [Mirrors](#)

Product Description

Rizoma Stealth Rear View Mirror BSS060A Out of the interface between racing experience and aeronautical inspiration comes a new mirror: Stealth, an accessory specifically designed for supersport bikes. It consists of a fixed part, which allows the fitting directly to the fairing, and a movable part, which acts as a mirror glass holder. Thanks to a rotating system, by a simple movement, the two parts get aligned: in closed position the mirror becomes an aerodynamic foil. While the mirror glass holder is always the same, the fixed component is designed ad hoc for each supersport bikes for which Stealth was developed, looking for the best solution to match the relative aerodynamic results. Made of billet aluminum, it has a convex glass surface to provide a wider viewing angle and is available in three different anodized colors. Stealth's design, with its wing-like shape and 25° angle relative to the ground, give it a linear look, ensure it generates downforce, in turn improving the bike's grip and handling performance, especially at high speed. Downforce pressure is around 4 kg at 300 km/h. The ergonomics has been optimized as well: when the rider takes a sporty riding position, the mirrors are aligned with the rider's eye level. In this way, the rider does not have to raise his position to get a correct rear view, keeping the head protected by the headlight fairing and, therefore, by the pressure that impacts the face at high speed.



SC-Project CR-T Carbon Fiber Exhaust Slip On Kawasaki ZX 10R

K38A-DET36C

[Read More](#)

SKU:

Price: ₹109,000.00

Categories: [Exhausts](#)

Product Description

SC-Project CR-T Carbon Fiber Exhaust K38A-DET36C The CR-T muffler is the the unmistakable signature of the Racing style of SC-Project. Multiple Moto2 World Champion was created to satisfy the best Teams and Riders. Designed and developed to give a sporty and racing character to Your Kawasaki Ninja ZX-10R with a deep and dark Sound is unique in the aftermarket silencer panorama. The iconic muffler is available in variant Carbon. To achieve the best performance the CR-T is built with materials derived from the aeronautical industry, such

as Carbon with dedicated treatment to withstand the highest temperatures. Bracket welding and fitting with T.I.G. technology. The insert bushings are all in Titanium machined from solid by CNC machines, which guarantee impeccable couplings. In the kit are included the full titanium link pipe and the carbon heat protection. Kit contents Slip-On muffler Link pipe Springs and screws SC-Project stickers 24 months SC-Project official warranty Homologation card



SC-Project CR-T Titanium Exhaust Slip On Kawasaki ZX 10R

K38A-DET36T

[Read More](#)

SKU:

Price: ₹109,000.00

Categories: [Exhausts](#)

Product Description

SC-Project CR-T Titanium Exhaust K38A-DET36T The CR-T muffler is the the unmistakable signature of the Racing style of SC-Project. Multiple Moto2 World Champion was created to satisfy the best Teams and Riders. Designed and developed to give a sporty and racing character to Your Kawasaki Ninja ZX-10R with a deep and dark Sound is unique in the aftermarket silencer panorama. The iconic muffler is available in variant Titanium. To achieve the best performance the CR-T is built with materials derived from the aeronautical industry, such as Titanium with dedicated treatment to withstand the highest temperatures. Bracket welding and fitting with T.I.G. technology. The insert bushings are all in Titanium machined from solid by CNC machines, wich guarantee impeccable couplings. In the kit are included the full titanium link pipe and the carbon heat protection. Kit contents Slip-On muffler Link pipe Springs and screws SC-Project stickers 24 months SC-Project official warranty Homologation card



SC-Project GP Tech Carbon Fiber Muffler Kawasaki ZX 10R

D04B-28C

[Read More](#)

SKU:

Price: ₹75,000.00

Categories: [Exhausts](#)

Product Description

For the first time ever in India!!

SC Project has created for Lanesplit a custom Carbon Fiber Muffler for the 300 - 1300cc bike segment, only for the India market. This product is not available anywhere else. The slip-on exhaust fits a wide variety of bikes (details in additional information). May need an additional link pipe, depending on bike model. Please contact us for any query. This product is limited to only 1 piece per customer. This is not a dual exhaust. Only 1 muffler included.

*** Picture is for representation and illustration only.**

The GP-TECH muffler characterized by its round and simple shape gives a sporty and attractive line to your motorbike. The GP-TECH is distinguished by the sporty exhaust end cap carbon fiber Twill. The visible welding with T.I.G. technology and the insert bushings made in CNC allow the silencer to be an added value. The muffler is equipped the DB-Killer and is approved for road use. In the kit are included the steel clamps with anti-vibration rubber for to install the silencers.

Specially produced for Lanesplit

Matte Carbon Fiber Sleeve Matte Carbon Fiber Cap Sleeve Dia 98mm Sleeve Length 280mm
Inlet diameter 52mm Internal Dia 52mm Support Bracket Removable dB-Killer



SC-Project S1 Exhaust Slip On Kawasaki ZX 10R

K38A-DET41T

[Read More](#)

SKU:

Price: ₹115,000.00

Categories: [Exhausts](#)

Product Description

SC-Project S1 Exhaust K38A-DET41T The S1 muffler represents for SC-Project the perfect combination of lightness and performance without compromise. Its conical shape with taut and essential lines make the S1 silencer fascinating giving outburst to Your Kawasaki Ninja ZX-10R. Born from the experience of the racing department on the circuits of the WSBK Championship, the silencer has a Titanium body with Carbon end cap with a special sound-absorbing material that resists high temperatures. To make it unique and unmistakable our Technicians have used the best production processes: brackets and fittings welded with T.I.G. technology, the insert bushings in titanium made in CNC and lasered Logo. From the high and powerful sound the S1 silencer will make the Sound of Your Moto unique. In the kit is included the full titanium link pipe. Kit contents Slip-On muffler Link pipe Springs and screws SC-Project stickers 24 months SC-Project official warranty Homologation card



SC-Project SC1-R Carbon Fiber Exhaust Slip On Kawasaki ZX 10R

K38A-DET91C

[Read More](#)

SKU:

Price: ₹109,000.00

Categories: [Exhausts](#)

Product Description

SC-Project SC1-R Carbon Fiber Exhaust K38A-DET91C The muffler SC1-R is created and

developed by the experience of the SC-Project racing department in the most important World Competitions. A look with taut and decided lines will enrich Your Kawasaki Ninja ZX-10R making it unique and exclusive. The exit pipe obtained by hydroforming and the carbon fiber end cap from the rhomboidal asymmetric shape make inimitable the silencer SC1-R. The lightweight outer body is available in Carbon version. The weldings with T.I.G., the sound-absorbing material resistant to very high temperatures and the insert bushings made in CNC machining embellish the SC1-R silencer. In the version Carbon on the silencer is applied an insert with the SC-Project logo as in the versions of our mufflers used in Competitions. In the kit are included the full titanium link pipe and the carbon heat protection. Kit contents Slip-On muffler Link pipe Springs and screws SC-Project stickers 24 months SC-Project official warranty Homologation card



SC-Project SC1-R Exhaust Slip On Kawasaki ZX 10R

K38A-DET91T

[Read More](#)

SKU:

Price: ₹129,000.00

Categories: [Exhausts](#)

Product Description

SC-Project SC1-R Exhaust K38A-DET91T The muffler SC1-R is created and developed by the experience of the SC-Project racing department in the most important World Competitions. A look with taut and decided lines will enrich Your Kawasaki Ninja ZX-10R making it unique and exclusive. The exit pipe obtained by hydroforming and the carbon fiber end cap from the rhomboidal asymmetric shape make inimitable the silencer SC1-R. The lightweight outer body is available in Carbon version. The weldings with T.I.G., the sound-absorbing material resistant to very high temperatures and the insert bushings made in CNC machining embellish the SC1-R silencer. In the version Carbon on the silencer is applied an insert with the SC-Project logo as in the versions of our mufflers used in Competitions. In the kit are included the full titanium link pipe and the carbon heat protection. Kit contents Slip-On muffler Link pipe Springs and screws SC-Project stickers 24 months SC-Project official warranty Homologation card

Sprint Air Filter Kawasaki ZX 10R



PM154S

[Read More](#)

SKU:

Price: ₹11,500.00

Categories: [Air Filters](#)

Product Description

Sprint Filter P08 is a standard performance air filter, ideal for street legal use or track day. Sprint Filter P08 uses a special polyester filtering media with a wire diameter of only 70 microns. Its unique weave pattern can filter debris as small as 80 microns while having the highest permeability for any other air filter brand on the market. The increased airflow of the P08 air filter will help maximize your motorcycle power potential while offering excellent filtration protection. Minimal maintenance Remove the filter from the airbox, blow it clean with compressed air, and reinsert it. No washing, cleaning or oil treatment needed. Product lifecycle The P08's polyester material will display no deterioration or loss of structure or performance if looked after with care.

STM Slipper Clutch Kawasaki ZX 10R



FKW-S081

[Read More](#)

SKU:

Price: ₹120,000.00

Categories: [Clutches](#)

Tags: [Kawasaki](#)

Product Description

Product Detail

Anti-Slip Oil Bath Clutch

From the classic line of Slipper clutches for Ducati motorcycles, mechanical machining is performed starting from full with the most modern numerical control machines (CNC) on various materials: ergal, anticorodal, stainless steel, titanium.



Stompgrip Anti-Slip Tank Grip Black Kawasaki ZX 10R

55-10-0040B

[Read More](#)

SKU:

Price: ₹7,000.00

Categories: [Tank Grip](#)

Product Description

Stompgrip Anti-Slip Tank Grip 55-10-0040B Color: Black Pre-formed stickers for all road and off-road motorcycles that improve grip on the tank, helping the body in both braking and cornering situations, without damaging the graphics of the bike that remain, in the transparent version, however visible. Stompgrip anti-slip grips are used by the best MotoGP and Superbike teams. Stompgrip is an American company, which offers a very high level product using high quality materials. Available in two colors: Transparent or Black.



Stompgrip Anti-Slip Tank Grip Clear Kawasaki ZX 10R

55-10-0040C

[Read More](#)

SKU:

Price: ₹7,000.00

Categories: [Tank Grip](#)

Product Description

Stompgrip Anti-Slip Tank Grip 55-10-0040C Color: Clear Pre-formed stickers for all road and off-road motorcycles that improve grip on the tank, helping the body in both braking and cornering situations, without damaging the graphics of the bike that remain, in the transparent version, however visible. Stompgrip anti-slip grips are used by the best MotoGP and Superbike teams. Stompgrip is an American company, which offers a very high level product using high quality materials. Available in two colors: Transparent or Black.



Tappezzeria Seat Cover Dexter Comfort Kawasaki ZX 10R

KWZX1R2DC-3GN-1

[Read More](#)

SKU:

Price: ₹33,000.00

Categories: [Seat Covers](#)

Product Description

ATTENTION: THIS PRODUCT ONLY INCLUDES THE COVER, SEAT IS NOT INCLUDED!

KWZX1R2DC-3GN-1 Exclusive seat cover made in black no-slip fabric, black carbon

look. Available with logo. This cover is combined on the inside with a special memory foam latex sponge, which gives more comfort to the saddle. Waterproof* and resistant at atmospheric agents. Reinforced with double stitching, high resistance to chemical agents. We deliver the detailed instructions manual for assembly. However, we recommend installation by qualified personnel.



Termignoni Stainless Steel Conical Heb Black Exhaust Slip On Kawasaki ZX 10R

K089094S006

[Read More](#)

SKU:

Price: ₹84,000.00

Categories: [Exhausts](#)

Product Description

Termignoni Stainless Steel Conical Heb Black Exhaust Slip on

Exhaust Slip on + link pipe

K089094S006



Termignoni Titanium GP2R Exhaust Slip On Kawasaki ZX 10R

K089094S002

[Read More](#)

SKU:

Price: ₹62,500.00

Categories: [Exhausts](#)

Product Description

Termignoni Titanium GP2R Exhaust Slip on

Exhaust Slip on + link pipe

K089094SO02



Vulturbike + Lanesplit Wheel Decal Kawasaki ZX 10R

Each set has 8 decals. 2 decals per side (total of 4 decals for 1 wheel) For the ZX 10R Front wheel - 17 inch Rear wheel - 17 inch

[Read More](#)

SKU:

Price: ₹800.00

Categories: [Wheel Rim Decals](#)

Tags: [BMW](#)

Product Description

For the first time in India!!

Vulturbike, the renowned Italian decal company has **appointed Lanesplit as the official dealer for India**. The two companies have collaborated and launched a special set of wheel decals only for the India market. Presenting the Vulturbike + Lanesplit set of decals for all India spec BMW, Kawasaki and KTM bikes with 17 and 19 inch wheels. This wheel decal has been specially designed by Vulturbike, after market survey and collaboration with Lanesplit. The wheel decals are printed on high grade Avery Dennison film, and the same material is used by manufacturers like Aprilia, BMW and Ducati for their company decals. The decals are printed and laminated and can be attached to any 17 or 19 inch rim and will last for long use. The decal design comprises of a checker flag, the company corresponding color and the Italian tricolore. This is a unique design created specifically for India by Vulturbike. It is only available at the Lanesplit retail and online store. Grab yours today and make your bike stand out from the rest of the crowd. Please see images for illustration and design concept A full wheel set consists of 8 decals + 2 free stickers of Lanesplit and Vulturbike

WRS Light Smoke Windscreen Kawasaki ZX 10R

KA009F

[Read More](#)

SKU:

Price: ₹11,400.00

Categories: [Windscreen](#)



Product Description

RACE HIGH WINDSCREEN WRS SMOKED KAWASAKI ZX-10 R / RR 2021-2022

Color: Smoked Code: KA009F WINDSCREEN AS HIGH AS ORIGINAL Windscreen made of high quality PMMA plexiglass DOT626 approved, the same material we use for the realization of the screens dedicated to the MotoGP and Superbike world championships. made using high quality PMMA plexiglass, DOT626 approved 2 mm thick. Racing windscreen used by numerous teams in the world championships, essential to receive maximum coverage from the air while driving. The design, studied in detail, fits perfectly with the line of the bike, giving it an even more appealing look. Attention: Interchangeable with the original windscreen, it replaces the standard one without modifications. Compatible with all the fairings on which the original windscreen can be installed.
